

Ars longa, vita brevas

This means that life's events run by quickly but the power of art endures. It is important that we take care of this collection for viewers for many years. We need your help to preserve and maintain the beauty and the enjoyment that this art holds.

The King County Public Art Collection is administered by 4Culture.

Using Percent for Art Funds from County construction budgets, the Collection has grown from its inception in 1973 to include work of the finest artists of the region, both established and emerging. The mission of the collecting program has been to ensure that the work and thinking of the artist, which reflects the diversity of our communities is incorporated into King County buildings, public places and infrastructure.



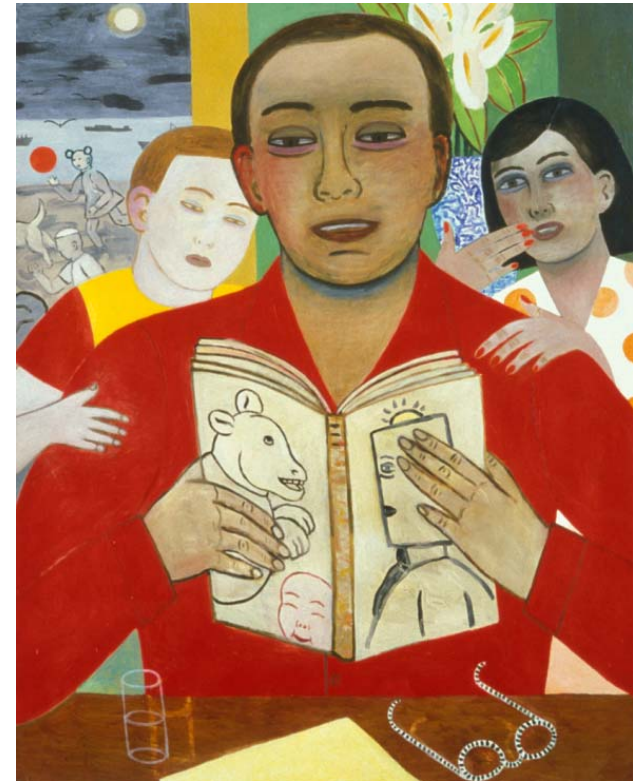
TEL 206.296.8674
FAX 206.296.8629

Seattle, WA 98104
WWW.4CULTURE.ORG



©Richard Gilkey, *Floodgate*, 1982,
Oil on panel, 48" x 84"

King County Public Art Collection CareGuide



©Fay Jones, *Reading Aloud*, 2002, acrylic on paper, 66.5" x 52.5"

4Culture

Display of the King County Public Art Collection

The King County Public Art Collection has over 1,500 artworks that can be seen in public buildings, hospitals and health centers, gathering places and parks. This is a wonderful and valuable cultural resource for all of you and your clients and visitors that come to our County. The staff of 4Culture is dedicated to displaying these artworks in a way that is respectful to the art and enjoyable for the viewers. Due to the size and breadth of the collection, care for the artworks requires extensive record keeping, on-site condition inspections, cleaning, repair, rotation and storage.

A key element in managing the collection is good communication with the facilities displaying art. Toward this end, we need to establish a contact person for the art in your area, and ask that the information be filled in on the form attached to this guide.

Please return the completed form to us. Retain this guide and keep it with the list that we will send you of the artworks that are displayed in your area.

For questions, concerns or rotation requests, please call
Public Art 4Culture at: 206 296.8674
or email publicart@4culture.org

We are also taking this opportunity to remind displaying facilities about their responsibilities in helping us to care for and maintain the artworks.

THINGS TO REMEMBER

1. I Wish You Would Call Me. Any problems, please call 206 296.8674. Report damage to artworks, frames or stands immediately. Report missing artworks immediately. Missing labels and deterioration of artworks, frames or stands should also be reported.

- 2. Where is that Painting?** Do not move or remove artwork. With many offices reorganizing, this is particularly important. Please, if your office is moving, remodeling or painting, give 4Culture advance notice.
- 3. Location, Location, Location.** Please be aware that artwork takes some special handling. In general, all work must be kept away from:
Food Sunlight Machinery Plants Signs
Use this guide as a handy ruler. Please keep signs no closer than the height of this guide. Do not obstruct or crowd the art (with plants, postings, memos, office equipment, etc.)
- 4. Clean Art is Happy Art.** Due to the wide range of materials and techniques that go into making the art, 4Culture staff must do most maintenance. However, occasional light cleaning by your department may be necessary. DO dust with a soft cloth or brush for artwork in frames and cases, especially the top surfaces. DO clean Plexiglas and glass with Plexiglas cleaner or water using a soft, damp cloth, DO NOT use a paper towel. DO NOT use glass cleaner or other toxic chemicals, and DO NOT spray fluid directly onto any surface. Restrict cleaning of all other artworks to specific guidelines.
- 5. The Only Constant is Change.** Unless a piece of art is specifically designed for one site, the work in the Collection rotates throughout the County facilities. After a piece has been in a location for three years, the 4Culture staff will notify you that the work will be removed as staff time permits and you may come select new work.
- 6. You Know What I Think?** Please tell us and we will consider adding your comments to the label.