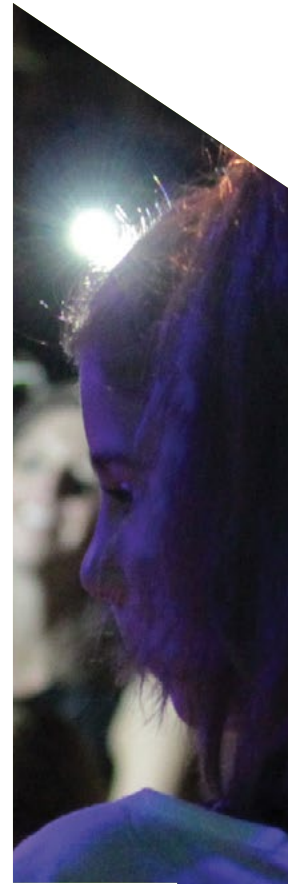


# 4Culture Annual Report 2015





# Letter from the Executive Director and Board President

**4Culture doesn’t begin any year with a theme in mind.** It is only at the end of the year, when we are looking back, that we see our programs, initiatives and activities revolving around a common subject. 2015 was a year of “Building Capacity.”

The most highly visible of our 2015 initiatives was a partnership between 4Culture, the King County Executive, and County Council to make an unprecedented \$28 million investment in cultural facilities in every corner of 2,200 square mile King County. King County encompasses urban centers, suburban cities, rural farmland, and national forests. Theaters, museums, cultural community centers, galleries, historic farmsteads, cultural landscapes, parks, barns, and landmark structures define our unique sense of place. As our region’s population increases dramatically, Building for Culture will expand the infrastructure for arts, heritage and culture to meet the growing needs of our diverse communities.

In 2015, 4Culture Heritage completed a two-year program engaging local history museums with the American Association for State and Local History Standards and Excellence Program, or, StEPs—a self-study curriculum that builds local history museums’ capacity to steward collections, build audiences, and govern effectively. King County now has more local museums enrolled in StEPs than any state in the nation except for Texas. StEPs King County has significantly enhanced the capacity of these small museums.

Our Public Art program used capital funds generated by the construction of the new King County children and family justice center to implement Creative Justice,

an arts-based alternative to youth incarceration. This program will minimize the need for detention, and increase the capacity of youth to find their place in the world.

4Culture’s Preservation program has a mandate to advocate for the values of preserving historic structures, but is also one of the few programs that goes beyond advocacy to fund bricks-and-mortar rehabilitation. A great example is Bob’s Quality Meats—a family-owned business in Columbia City, which was damaged by fire, temporarily closing the business. When insurance did not fully restore the building, a Building for Culture grant allowed Bob’s to re-open to the diverse communities they serve and count as neighbors.

And in 2015, the third year of Open 4Culture built capacity for artists through this no-deadline, easy-access alternative to our annual funding programs, which were not reaching many of King County’s immigrant and refugee populations. We are creating a way to forge relationships with our newest neighbors. In this report you will learn about Humaira Abid, an artist who immigrated to Seattle from her native Pakistan in 2008, applied for an Open 4Culture grant, and by 2015 had exhibited widely at other venues.

For 4Culture, 2015 was a banner year. Check out just a few of the highlights here in our annual report—we can’t wait to see what 2016 brings.

Alka Badshah  
Board President

Jim Kelly  
Executive Director

Restored worker’s cabin will relocate to the new Latino Museum & Cultural Center, © 2015 MASON TRINCA/Yakima Herald-Republic.





### SPOTLIGHT ON HUMAIRA ABID

4Culture grants help fund everything from kites to kilns, surveys to screenplays, but an application submitted in 2013 to our Open 4Culture program presented a first: grants for ants.

Open 4Culture is all about expanding reach—ours, and the reach of individuals and organizations who are brand new to 4Culture and, often, to the grant process in general. The program makes small grants available to first-time applicants living and working outside of Seattle. After beginning her career in Lahore, Pakistan, artist Humaira Abid relocated to King County, ready to grow and explore. In her Open 4Culture application, she stated unequivocally, “I want to take traditional mediums and do something new and better.”

Humaira put her Open 4Culture grant to work purchasing fabricated ants. The extremely realistic insects unified a

collection of intricate wood sculptures she created for the Bellevue Art Museum’s 2014 Biennial: Knock on Wood. In 2015, from the springboard of Open 4Culture—her first grant application experience in the U.S.—Humaira went on to receive a 4Culture Art Projects grant and funding from other organizations, sit on panels and juries, show her work in galleries and museums across the region, and more. Local television station KCTS 9 profiled Humaira’s work in an Emmy-nominated segment, and she has continued to garner regional, national, and international attention.

Watch for Humaira this year as she and her work continue to flourish. She’s given us fair warning that, with a new body of work, she is “...pushing boundaries of mediums and concepts and aims to take them to a level that has not been done before.”

Humaira Abid, © 2014 KCTS9, photo by Laila Kazmi.

“Open 4Culture gave me the opportunity to experiment, to push the boundaries of mediums and concepts. It opened the doors to more grants, public speaking, juror on panels, gallery and museum shows...”

Humaira Abid

## PROGRAMS

### Projects

Applicants	Awardees
Groups 120	Groups 57
Individuals 269	Individuals 69
Amount awarded	
Groups \$230,000	
Individuals \$370,500	

### Sustained Support

Applicants 303
Awardees 291
Amount awarded \$1,750,000

### Historic Site Specific

Applicants 27
Awardees 14
Amount awarded \$134,954

### Emergency / Unforeseen Opportunities

Awardees 4
Amount awarded \$35,000

### Artists Up

This unique partnership with the Seattle Office of Arts & Culture and Artist Trust works to better meet the needs of all artists and specifically artists of color. In 2015, we released a comprehensive report and are putting it to work to create positive change in our grantmaking processes.

### Touring Arts Roster

We celebrated the 30th anniversary of the Touring Arts Roster by adding more new acts than ever before, and by reintroducing an incentive program for booking TAR artists.



SPOTLIGHT ON **STEPS 4CULTURE**

**Heritage organizations across the country look to the American Association for State and Local History’s Standards and Excellence Program—or, StEPs—as a model for quality.** This rigorous self-assessment curriculum sets the national standard, and is challenging for even the largest, best-funded of organizations—so where does that leave a local, volunteer-run historical society?

Bringing together a powerful combination of professional development, mentorship, peer support, and grants, StEPs 4Culture guides cultural organizations across King County through the national curriculum. It harnesses the expertise and support of King County’s interconnected heritage community to strengthen their work. Over the course of two years, representatives from more than 30 organizations explored the standards detailed in the national StEPs workbook. This series of in-depth convenings covered everything from board governance to audience engagement, concluding in October 2015. Several organizations—many from South King County, an area historically underrepresented in cultural conversations—applied for funding to expand their work in StEPs.

The Black Heritage Society of Washington State is one such success story. As a result of their commitment to StEPs, they received funding to implement two key, capacity-building projects in 2016: an all-day board retreat with a 90-day timeline for putting new ideas into action, and a comprehensive assessment of their historic collection of artifacts, documents, and photographs. Watch where this all-volunteer organization takes their new strategies and tools!



Caring for the collection, © 2004 The Black Heritage Society of Washington.

**PROGRAMS**

Projects	Sustained Support	Collections Care	Emergency
Applicants 64	Applicants 45	Applicants 28	Awardees 1
Awardees 31	Awardees 45	Awardees 16	Amount awarded \$12,640
Amount Awarded \$199,963	Amount awarded \$351,000	Amount awarded \$78,000	





**PRESERVATION**

**SPOTLIGHT ON BOB’S QUALITY MEATS**

**For a family that has been in the same business for over 100 years,** the Ackleys are enthusiastic about trying new things: “We have added hotlinks when African American customers requested them, sourced just the right beef for Ethiopian kitfo, and found goat for other East African customers.” From their store on Rainier Avenue—a building that has changed little since 1892—this family of butchers served a vibrant, dynamic community until a July fire forced them to close for the first time since 1981.

The Bob’s Quality Meats building is a cornerstone of the Columbia City Historic District, with strong stewards in the Ackleys. In the 35 years since purchasing the building—taking over for another family of longtime butchers—they’ve taken pride in maintaining its historic use and character. They bring the same standards to their business practice, sourcing from local farmers and working to keep prices accessible to everyone in the neighborhood.

The burned roof, walls, and second floor—in addition to ruined equipment—would have been an expensive fix for any business. But the Ackleys’ commitment to preserving the historic character of their building added significantly to their costs. These first-time 4Culture grant applicants put Saving Landmarks funds to work both restoring the building’s historic features and bringing it up to modern code, making them well-positioned to serve the community for decades to come. Columbia City celebrated when, on December 9, Bob’s Quality Meats reopened just in time to fill holiday orders.

Image: Bob’s Quality Meats, © 2015 The Seattle Times/Greg Gilbert.

“It is certainly significant for us as a family, but we think it’s a big deal for the neighborhood, and a big deal for Seattle as a city, too.”

James Ackley

**PROGRAMS**

**Special Projects**

Applicants 19  
Awardees 12  
Amount awarded \$85,000

**Landmarks Capital**

Applicants 45  
Awardees 16  
Amount awarded \$270,000

**Sustained Support**

Applicants 20  
Awardees 19  
Amount awarded \$90,000

**Emergency**

Awardees 3  
Amount awarded \$16,445





## PUBLIC ART



### SPOTLIGHT ON CREATIVE JUSTICE

In response to research showing the failure of juvenile incarceration, our region has done remarkable work to move in a new direction. However, not all young people have benefited equally: almost three quarters of juvenile detention admissions in 2014 were youth of color. King County and the City of Seattle have committed to ending this racial disproportionality, and the community has called for an end to youth detention. Creative Justice is an innovative approach to this regional effort, offering an arts-based alternative to incarceration for court-involved young people, designed to effect individual and systemic transformation.

Experienced Mentor Artists engage participants in multi-disciplined arts learning experiences that consider the root causes of incarceration. The program uses art to amplify youth voices, provides the creative tools for understanding their circumstances, and equips them with skills to be leaders in the community. In exchange for their creative work, youth receive community service credit and stipends that help pay court fines. At the end of each session, youth produce actions and events where they share their creativity, vision, and new abilities.

In its pilot year, Creative Justice made real, lasting impact in the lives of participants. Youth formed relationships with artists and each other, and made powerful art that speaks to the need for change.

Creative Justice mentor artist Otieno Terry,  
© 2015 Timothy Agüero Photography.

### Harborview Medical Center Window Treatment

Four artists designed murals for sky bridges at Harborview Medical Center. The imagery was digitally printed onto transparent vinyl film and applied to the windows—creating translucent murals to amplify light, beautify corridors, and create privacy for patients.

### Lake to Sound Trail Kit of Parts

Artists Jenny Heishman and Kurt Kiefer designed a “Kit of Parts”—12 interchangeable sculptural components—to connect and unify the 16-mile Lake to Sound Trail, which passes through five cities and will be built in phases.

### Poetry on Buses: Writing Home

Poetry on Buses invited King County to create, share, and experience poetry—on the theme of “Writing Home”—on the bus, online, and in communities. 365 poems in five languages were displayed on buses, stations, and in an online poetry portal, which received over one million page views.

### Creative Justice

Creative Justice is an arts-based alternative to incarceration for King County youth. In 2015, 48 participants collaborated with mentor artists to consider the root causes of incarceration and focus on the positive role youth can play in society. As a result, 31 charges against participants were dismissed.





“As the most important force for good in King County’s cultural world, 4Culture’s imprimatur means the world to us.”

Elizabeth P. Stewart,  
Renton Historical Society



## PROJECTS

### Open 4Culture

Applicants **32**  
Awardees **21**  
Amount awarded **\$28,050**

### Equipment

Applicants **158**  
Awardees **59**  
Amount awarded **\$310,000**

### Building for Culture

Applicants **119**  
Awardees **100**  
Amount awarded **\$28,416,716**

4Culture’s four program areas—Arts, Heritage, Preservation, and Public Art—bring expertise and focused attention to the King County individuals and organizations working in these fields. But it’s also important to recognize that a lot of that work bridges discipline, creating rich, multi-dimensional cultural experiences for County residents. These grant programs support projects that defy categorization.

### Open 4Culture

This program lives up to its name by providing a low-barrier entry point to 4Culture, and to the competitive grant process in general. Through small grants of up to \$1,500 that have no deadline, Open 4Culture augmented both our reach in underserved areas and the capacity of innovative cultural doers in 2015.

### Equipment

Museum shelving, stage lights, ceramic kilns—on their own they may not seem like much, but in the hands of King County’s incredible cultural organizations, they add up to a lot. Cultural Equipment grants supported critical needs across King County this year.

### Building for Culture

With the early retirement of the County’s King Dome debt, 4Culture and the King County Council partnered to make a historic, one-time investment of \$28 million in our region’s cultural infrastructure. Organizations of all disciplines and sizes from every corner of King County received funding—see how they grow and transform in 2016!

Images (facing page, from left): Green stage, © 2015 Shakespeare in the Park. Washington Hall restoration, © 2015 Sean Stearns. This page: Ben Zamora, MANDALA, 2015. Photo by Oliver Endahl.





**GALLERY4CULTURE**

## Gallery4Culture

What began as an informal exhibition program on our office walls in 1979 has grown into a vital cultural resource and an instrumental launch pad for King County artists. 2015 saw a roster of dynamic and boundary-pushing shows in the gallery—from individual artists to collectives, photography to interactive installations, and everything in between.

### 2015 Gallery4Culture artists:

#### January

Ken Kelly

#### February

John Radtke

#### March

Duwamish Residency Artists

#### April

Kimberly Trowbridge

#### May

Emma Jane Levitt

#### June

Christopher Buening

#### July

Let's

#### September

Sadie Wechsler

#### October

Robert Twomey and  
Matthew Whitney

#### November

Alexander Mouton

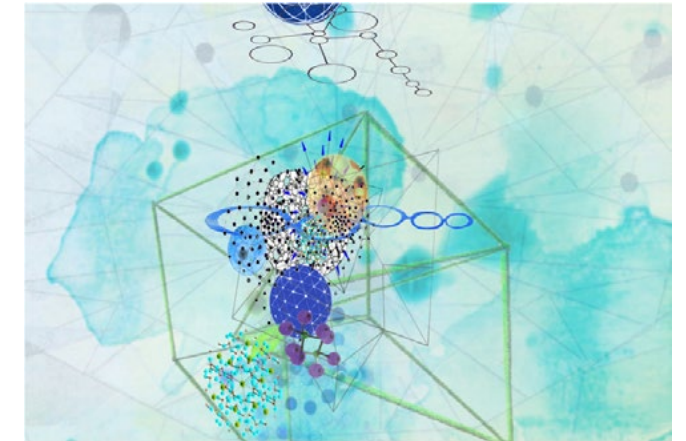


Images (clockwise from top): Sadie Wechsler. *Eruption*, 2012. Inkjet print, 64 x 84 inches. Ken Kelly, *Eyes and Ears*, 2012. Oil on canvas, 84 x 96 inches. Photo by John Hollingsworth. Matthew Whitney, *Movement Must Also Move*, 2015. Graphite and pastel on paper, 34 x 60 inches.





**Images: Facing page (from top):** Tess Martin's *Part of the Cycle* at e4c, Photo © 2016 Sean Stearns. **This page (from top):** Barbara Robertson, *Accumulation*, 2015. e4c at the Gates Foundation, © Andrew Pogue..



## e4c

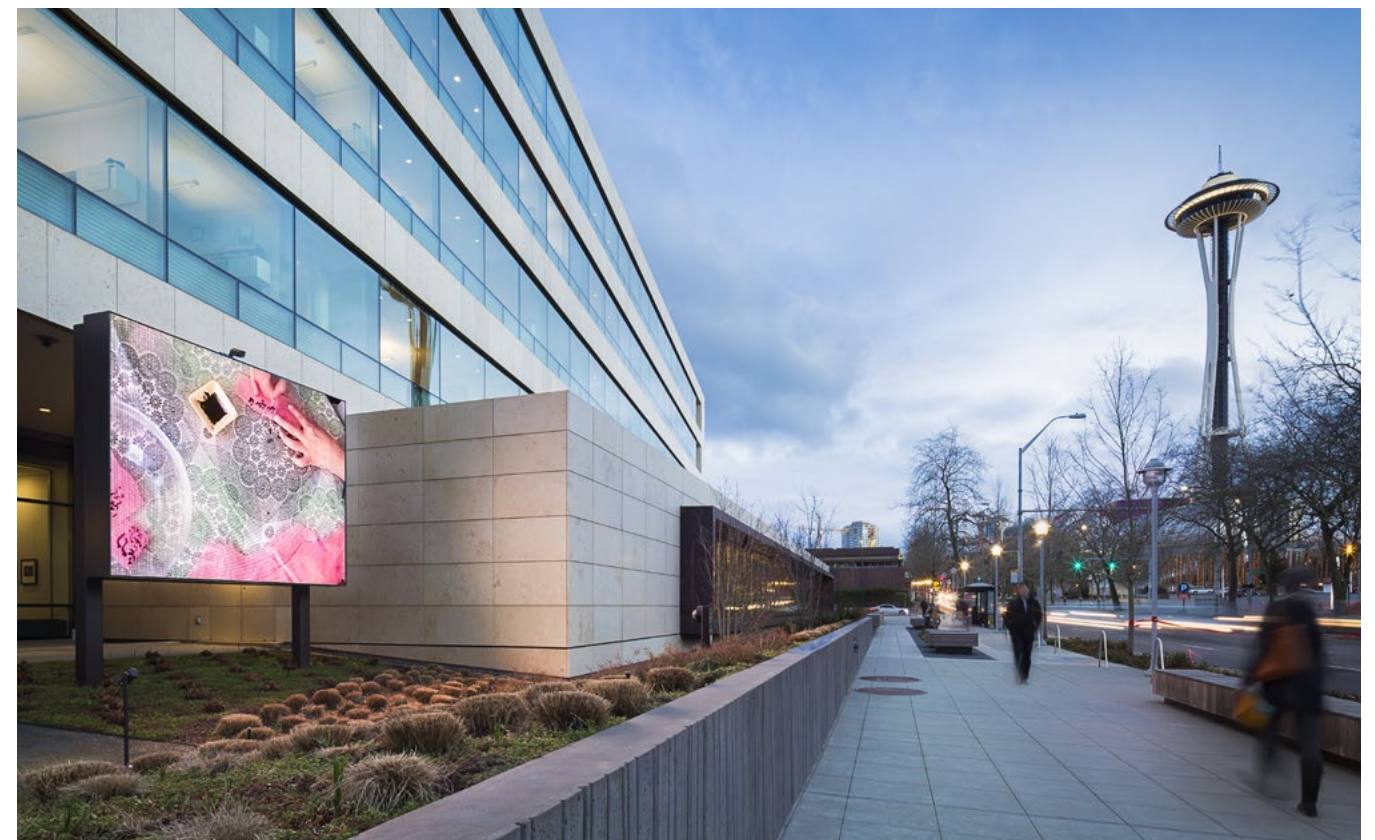
The next time you find yourself walking, riding, or cycling by our offices on Prefontaine Place South, take a minute to enjoy some of the country's most dynamic digital art, displayed on our wall of state-of-the-art screens. e4c—or, electronic 4Culture—puts filmmakers, animators, and designers in front of the public every day.

2015 brought a major technology overhaul and upgrade, revitalizing the viewer experience. When equipment from 2008 started showing the wear of operating for 15 hours daily, we re-imagined the system, working with local contractors to design and install the simple new e4c. The result is an intimate and immersive street-front experience. It offers artists more flexibility and presents their stunning media work in vibrant, rich color.

After this hiatus, the second half of 2015 was a celebration of exciting media on e4c, with pieces by five artists—selected from a pool of 35 applicants from across the United States—coming to life on our new screens. New work continues to be added to the rotation—make sure to make time for this unique, urban experience.

### 2015 e4c artists:

Evertt Beidler  
Joseph Gray  
Tess Martin  
Barbara Robertson  
Joseph Farbrook





# Looking Ahead

**As our region evolves, 4Culture is doing the same.**

2016 brings a roster of programs and initiatives that see us working in new ways—new partnerships, new ideas, new models. We’re excited to announce our Equity & Inclusion Initiative, identifying and supporting communities and groups we don’t yet fully serve, and building the strength of groups who do serve those King County citizens. We’ll offer grants up to \$25,000 and technical assistance on a wide-open, no-deadline schedule beginning this summer with a goal of increasing access to every 4Culture program. Stay tuned!

Artists Up—an inter-agency partnership between 4Culture, the City of Seattle Office of Arts and Culture, and Artist Trust—is a key component in learning how to better serve our communities. In 2016, Artists Up will continue to focus on improving the panel process—a central concern for underserved artists. Material collected from focus groups and networking events is currently being evaluated by Artist Ambassadors. A new panel model will be developed from this research and an experimental pilot grant program will test the model. The ultimate goal is to identify ways to provide greater access and foster successful results for artists that are frequently excluded from the grant process at large.

2015 marked the 25<sup>th</sup> anniversary of the Americans with Disabilities Act and the fifth year since major changes were made to improve national standards. As a key supporter of equipment and building improvements, 4Culture takes this seriously—helping patrons with disabilities enjoy performances and exhibits is a priority for us. In 2015, 4Culture, in partnership with Let’s Loop Seattle, supported hearing loop systems for Town Hall Seattle, Seattle Repertory Theater and The Theater at Meydenbauer. Our vision for 2016 is to make sure



Welcome to Our Native Land Coastal Day & Pow Wow, © 2015 Kim Camera.

every public cultural facility throughout the County has the information and equipment needed to provide full access to great arts and heritage experiences.

Making public spaces engaging for all is a 2016 priority for our Public Art department as well. 4Culture and King County’s Wastewater Treatment Division have commissioned artist team Sans façon to develop an art master plan for the Combined Sewer Overflow (CSO) system. The CSO system is designed to reduce the amount of wastewater flowing into Seattle lakes, the Duwamish River, and Puget Sound, and the plan will lay a framework for art experiences that reveal this hidden system. Water will also be central to a public art program that is not new, but expanding in very new ways in 2016—Poetry on Buses. The beloved program will return, featuring new partnerships with the City of Seattle Public Utilities and Sound Transit. Poems will explore our region’s relationship to water and will appear on buses, light rail, and streetcars. In the summer, another piece of our transit system will be infused with art, as the SODO Track comes to life. The 2.5-mile stretch of 4th Avenue



Our Community

Staff

Jim Kelly  
Riza Almanza  
Tamar Benzikry-Stern  
Cath Brunner  
Anna Callahan  
Christina DePaolo  
Heather Dwyer  
Ryan Fedderson  
Bret Fetzer  
Jordan Howland  
Heidi Jackson  
Noy Kitnikone  
Phung Lam  
Raya Leary  
Flo Lentz  
Brandi Link  
Esther Luttkhuizen  
Doreen Mitchum  
Melissa Newbill  
Charlie Rathbun  
Lauren Semet  
Sean Stearns  
Eric Taylor  
Debra Twersky  
Bill Whipple

Board of Directors

Alka Badshaw, President  
Robin Avni, Vice President  
Kirstin Haugen, Secretary  
Alan Cornell, Treasurer  
Tracey Wickersham,  
Member at Large  
Stephen Elliott  
Felicia Gonzalez  
Tom Ikeda  
Patricio Mendoza  
Chris Moore

Ana Pinto da Silva  
Nate Robinson  
Mitchell Shepherd  
Heather Trescases  
Hollis Wong-Wear  
  
**Ex Officio Board Members**  
  
Kathy Lambert, King  
County Council District 3  
Joe McDermott, King  
County Council district 8  
Larry Phillips, King County  
Council District 4

Advisory Committees

**Arts**  
Shelley Brittingham  
Lawrence Ellis  
Stephen Elliott  
Bernie Griffin  
Joshua Heim  
Dan Mayer  
Bryan Ohno

**Heritage**  
Brian Carter  
Cassie Chinn  
Maya Farrar  
Kevin Henry  
Nancy McKay  
Eric Nelson  
Chieko Phillips  
Heron Scott  
Heather Trescases

**Preservation**  
Richard Anderson  
Brooke Best  
Manish Chalana  
Nathaniel Howe

Chris Moore  
Krista Whitters  
Eugenia Woo  
  
**Public Art**  
Alka Badshah  
Lucrecia Blanco  
Cris Bruch  
Stefano Catalani  
Maria Gamboa  
James Hughes  
Selina Hunstiger  
Mark Johnson  
Erika Dalya Massaquoi

**Panelists**  
Humaira Abid  
Ben Andrews  
Jillian Andrews  
Shawn Belyea  
Nilki Benitez Wherrette  
Erin Elyse Burns  
Mary Pat Byrne  
Kim Camara  
Davis Caroline  
Brian Carter  
Manuel Cawaling  
Manish Chalana  
Katie Chase  
Robin Cole  
Jaclyn Commodore  
Aaron Counts  
Webster Crowell  
Jessie Cunningham  
Alex Curio  
Rebecha Cusack  
Owen David  
Tom Drugan  
Amy Dukes  
Stephen Elliott  
Lawrence Ellis  
Jason Everett

Taidi Fang  
Maya Farrar  
Baso Fibonacci  
Rainbow Fletcher  
Ricardo Fraser  
Randi Ganulin  
Keith Gillin  
Kate Godman  
Erin Goodman  
Felicia Gonzalez  
Ruth Gregory  
Miguel Guillén  
Kamea Hadar  
Laura Haddad  
Jeppa Hall  
Brad Hampton  
Iyun Harrison  
Joshua Heim  
Ellen Hochberg  
Doug Honeyman  
Lauren Hoogkamer  
Mari Horita  
Douglas Howe  
Peter Hummel  
Abby Impanbutr  
Anthony Jackson  
Chris Jenkins  
Aron Johnson  
Cyrus Khambatta  
Kay Kornovich  
Lissa Kramer  
Doug Landerth  
Pamela Lavitt  
Carolyn Law  
Stephanie Lile  
Allison Loveland  
Vikram Madan  
Karen Marshall  
Savina Mason  
Annett Mateo  
Maija McKnight

Colleen McPoland  
Jennifer Meisner  
Patricio Mendoza  
Heather Miller  
Chris Moore  
John Morefield  
Dirk Mosis  
Jennifer Navva Millikin  
Richard Nelson  
Sean Nelson  
Nate Omdal  
Christina Orbé  
Sara Marie Ortiz

Rebecca Ossa  
Mary Ann Peters  
AC Petersen  
Chieko Phillips  
Steve Ramsey  
Peter Reiquam  
Matthew Richter  
Aaron Rubardt  
Lynn Schirmer  
Heron Scott  
Sheryl Shiefel  
Lara Simmons  
Suzanne Simmons

Delila Simon  
Dale Smith  
Susan Sobel  
Joseph Steininger  
Daniel Stoner  
David Strauss  
Doug Streeter  
Barbara Swift  
Miho Takekawa  
Zorn Taylor  
Suzanne Tidwell  
Heather Trescases  
Jeremy Webb

Storme Webber  
Dick Weiss  
Deborah Westwood  
Krista Whitters  
Tracey Wickersham  
Bryan Yeck



DK Pan  
Time is Memory  
© 2014. Photo by DK Pan.





Cheronna, *Worth My Salt*, 2015. Photo by Jody Kuehner.

# Grant Recipients

## Presentations

**Academy of Music Northwest** Sustained Support

**ACIT Seattle** Sustained Support, Equipment

**\*James Ackley, Bob’s Meat Market/Nelson’s Butcher Shop, Seattle** Building for Culture: *Reconstruction and Restoration After Fire*

**\*Admiral Cinema, Seattle** Building for Culture: *Admiral Theater Renovation*

**AfroLatino Festival** Art Projects: *Afrolatino Festival Seattle 2015*

**\*Jordan Alam** Open 4Culture

**Alliance for Pioneer Square** Sustained Support

**Allied Arts of Renton** Art Projects: *Fall Family Concert*

**American Romanian Cultural Society** Art Projects: *The 2nd Romanian Film Festival in the Pacific Northwest*

**Paul Anastasio** Art Projects: *New Works in the Living Tradition of Mexico’s Hot Lands*

**Annex Theatre** Sustained Support

**\*Stephen Anunson** Art Projects: *The Boy Who Lived Before*

**Rick Araluce** Art Projects: *The Great Northern*

**Arc Dance Productions** Sustained Support

**\*Jo Ardinger** Art Projects: *PERSONHOOD*

**ArtEast** Sustained Support, Equipment

**Artist Trust** Sustained Support

**Artist Up** Community Partner

**Arts Alive!** Sustained Support

**Arts and Visually Impaired Audiences** Sustained Support

**ArtsEd WA** Community Partner

**Arts Corps** Sustained Support

**Arts of Kenmore** Sustained Support

**\*Arts Unlimited of Renton** Sustained Support

**\*First-time grant recipient ArtsFund** Community Partner

**ArtsWest** Sustained Support

**Association of King County Historical Organizations AKCHO** Community Partner

**Auburn Performing Arts Center** Sustained Support

**Auburn Symphony Orchestra** Sustained Support

**\*Aurora Theatre Company** Art Projects: *Fiddler on the Roof*

**\*Backbone Campaign** Sustained Support

**Bailadores de Bronce** Sustained Support

**\*Anna Balint** Art Projects: *Words from the Cafe*

**\*John Harry Baluran** Art Projects: *The Soufend Art Show*

**\*Paul Barry, Louis S. Marsh House, Kirkland** Building for Culture: *Window Restoration*

**\*Sarah Bassingthwaighte** Art Projects: *House of Doors Concerto for Flute and Orchestra*

**Beacon Arts** Sustained Support

**\*Corrie Befort** Art Projects: *A Rendering*

**Bellevue Arts Museum** Sustained Support, Community Partner

**Bellevue Chamber Chorus** Sustained Support

**Bellevue College Foundation** Sustained

Support

**Bellevue Downtown Association** Art Projects: *Bellevue Jazz Festival*

**Bellevue Youth Symphony Orchestra** Sustained Support

**Bellevue Youth Theatre** Sustained Support

**Bells of the Sound** Sustained Support

**\*Cara Bertron** Heritage Projects: *Road Story: People and Place on Rainier Ave South*

**\*Bing Kung Bo Leung Incorporated, Bing Kung Association Building, Seattle** Building for Culture: *Seismic Upgrades*

**Black Diamond Historical Society** Sustained Support, Equipment

**\*Blanca Santander** Art Projects: *Daughters of Immigration*

**Blessed Sacrament Church, Seattle** Building for Culture: *Stained Glass Window Restoration*

**Blue Earth Alliance** Sustained Support

**Blue Street Jazz Voices** Sustained Support

**Book-It Repertory Theatre** Sustained Support

**Bothell Historical Museum Society** Sustained Support

**\*Brain Injury Alliance of Washington** Art Projects: *Brain Injury Art Show*

**\*Brazil Arts & Education LLC** Art Projects: *Steps*

**Brazil Center for Brasilfest** Sustained Support

**\*First-time grant recipient**

**\*Tanya Brno** Art Projects: *Downriver Hymns*

**Broadway Bound Children’s Theatre** Sustained Support

**Sheri Brown** Art Projects: *GALAANZA III Sea Hawk Spirit Seeks Justice*

**\*Tyrone Brown** Historic Site Specific *The Slave Ship Project*

**\*Paul Budraitis** Art Projects: *World premiere of Emily Conbere’s Knocking Bird*

**Bulgarian Cultural and Heritage Center of Seattle** Sustained Support

**Burien Actors Theatre** Sustained Support

**Burien Arts Association**



Eroyn Franklin and Tory Franklin, *Fecund (detail)*, Vinyl on window. © 2015, photo courtesy of the artist.





Etienne Cakpo performing *Dance Garden: A Celebration of World Dance and Music*, 2015 © Erick Stuhaugh.

Sustained Support	<b>Cascadian Chorale</b> Sustained Support	Sustained Support
<b>Burke Museum Association</b> Sustained Support, Equipment, Building for Culture: <i>The New Burke</i>	<b>*Claudia Castro Luna</b> Art Projects: <i>How to Say Goodbye</i>	<b>Jessie Chen</b> Art Projects: <i>Beneath Tiananmen Square: Diaspora &amp; Burial</i>
<b>Bus Shelter Mural Program</b> Art Projects: <i>Mirroring Life: Photographic Artworks on Bus Shelters</i>	<b>Center for Wooden Boats</b> Sustained Support, Heritage Projects: <i>Lake Union History—From the Water</i> , Building for Culture: <i>The Wagner Education Center</i>	<b>*Chief Seattle Club</b> Equipment
<b>*Meg Bye</b> Historic Site Specific <i>Installation</i>	<b>Center on Contemporary Art (CoCA)</b> Sustained Support	<b>Children’s Music Foundation</b> Community Partner
<b>The Cabiri</b> Sustained Support	<b>Centerstage Theatre Arts Conservatory, Inc.</b> Sustained Support, Equipment	<b>Chinese Arts &amp; Music Association</b> Sustained Support
<b>Etienne Cakpo</b> Art Projects: <i>DanceGarden: A Celebration of World Dance and Music</i>	<b>*Central Area Senior Center</b> Building for Culture: <i>Green Dolphin, Entertaining Seniors and the Community</i>	<b>Choir of the Sound</b> Sustained Support
<b>Eduardo Calderón</b> Preservation Special Projects: <i>Bridges in King County</i>	<b>Central District Forum for Arts &amp; Ideas</b> Sustained Support	<b>Chong Wa Benevolent Association, Chong Wa Hall, Seattle</b> Preservation Special Projects: <i>Chong Wa Rehabilitation Plan</i> , Building for Culture: <i>Expanding Functionality</i>
<b>Camlann Medieval Association</b> Sustained Support	<b>*Ceol Cascadia</b> Sustained Support	<b>Choral Arts</b> Sustained Support
<b>Cascade Foothills Chorale</b> Sustained Support	<b>Chamber Music Madness</b>	<b>*CIRCC (Coalition of Immigrants, Refugees &amp; Communities of Color)</b> Equipment
<b>Cascade Performing Arts Council</b> Sustained Support		<b>City of Auburn</b> Sustained Support, Equipment, Building for Culture:

<i>Creation of the Auburn Arts Center</i>
<b>City of Bellevue</b> Sustained Support, Building for Culture: <i>Bellevue Youth Theatre Programming Opportunities and Code Improvements</i>
<b>*First-time grant recipient</b>
<b>City of Bothell</b> Sustained Support, Art Projects: <i>Music in the Park</i>
<b>City of Burien</b> Sustained Support, Building for Culture: <i>Repairs and Improvements for the Moshier Art Center</i>
<b>City of Des Moines</b> Sustained Support, Building for Culture: <i>Covenant Beach Sun Home Lodge Restoration Project</i>
<b>City of Duvall</b> Sustained Support, Building for Culture: <i>Mobile Stage</i>
<b>City of Enumclaw</b> Sustained Support
<b>City of Federal Way</b> Sustained Support, Building

for Culture: <i>Performing Arts &amp; Event Center</i>
<b>City of Issaquah</b> Sustained Support
<b>City of Kent</b> Sustained Support
<b>City of Kirkland</b> Sustained Support, Preservation Special Projects: <i>Landmark Nominations</i>
<b>City of Mercer Island Arts Council</b> Sustained Support
<b>City of Newcastle</b> Equipment
<b>City of Normandy Park Arts Commission</b> Sustained Support
<b>City of Redmond</b> Sustained Support
<b>City of Renton</b> Sustained Support
<b>City of Sammamish</b> Sustained Support
<b>City of SeaTac</b> Sustained Support
<b>City of Seattle</b> Sustained

Support
<b>City of Shoreline Public Art</b> Building for Culture: <i>Shoreline Veterans Recognition Plaza</i>
<b>City of Snoqualmie</b> Sustained Support
<b>City of Tukwila</b> Sustained Support, Building for Culture: <i>Duwamish Hill Preserve – Puget Sound Salish Cultural Garden</i>
<b>Clarion West</b> Sustained Support
<b>Classical KING FM 98.1</b> Sustained Support, Equipment
<b>Anna Conner</b> Art Projects: <i>Exercises for the unrested: The kingmaker</i>
<b>*Copper Canyon Press</b> Sustained Support
<b>Coriolis Dance Collective</b> Sustained Support
<b>Coyote Central</b> Sustained Support, Building for Culture: <i>HVAC for Coyote Central</i>

<b>DAIPANbutoh</b> Sustained Support
<b>*Kate Dandel</b> Art Projects: <i>Gold Balls</i>
<b>*Dandylyon Drama</b> Sustained Support
<b>Savvy Dani</b> Art Projects: <i>Face on the Wall</i>
<b>DASSdance</b> Sustained Support
<b>Michelle de la Vega</b> Art Projects: <i>SUCCESSION</i>
<b>Deaf Spotlight</b> Sustained Support
<b>*Carina A del Rosario</b> Art Projects: <i>Passport Office and Series</i>
<b>Delridge Neighborhood Development Association</b> Sustained Support, Emergency, Preservation Special Projects: <i>Cooper School Site Planning</i> , Building for Culture: <i>Elevate Youngstown</i>
<b>Delta Masonic Temple</b> Landmarks Capital: Re-

<i>Roofing</i> , Building for Culture: <i>Masonry Restoration</i>
<b>August Denhard</b> Art Projects: <i>The Silk Road: Trade and the Currency of Music</i>
<b>*First-time grant recipient</b>
<b>Densho: The Japanese American Legacy Project</b> Sustained Support, Equipment, Heritage Projects: <i>Digitizing Photos for Japanese American Oral Histories</i>
<b>Des Moines Historical Society</b> Sustained Support
<b>Des Moines Memorial Drive Preservation Association</b> Preservation Special Projects: <i>Web Site Development to Promote DMMD History and Future Centennial Celebrations</i>
<b>*Design in Public</b> Sustained Support
<b>Discover Your Northwest</b> Open 4Culture



Ruth Coughlin performing *Within the Silence for Living Voices*, 2015 © Michael McClinton.





Saul Williams at Seattle Arts and Lectures, 2015  
© Libby Lewis Photography

**\*Dock Street Properties, Hansen Building, Seattle**  
Building for Culture:  
*Seismic Retrofit*

**Docomomo WEWA**  
Sustained Support

**Drama Dock** Sustained Support

**\*Dreams Unlimited Art**  
Projects: *#DreamsUnlimited @KING COUNTY*

**Duvall Foundation for the Arts** Open 4Culture,  
Building for Culture:  
*Community Arts Center (Thayer Barn)*

**Duvall Historical Society**  
Sustained Support

**Duwamish Tribal Services**  
Sustained Support

**Early Music Guild of Seattle** Sustained Support

**Earshot Jazz Society of Seattle** Sustained Support

**Eastside Heritage Center** Sustained Support, Collections  
Care, Community Partner

**Eastside Nihon Matsuri Association** Art Projects:  
*Aki Matsuri 2015*

**Eastside Symphony**  
Sustained Support

**EB Dunn Historic Garden Trust** Sustained Support, Emergency, StEPs  
4Culture Capacity Building Grant

**Eclectic Theater Company**  
Sustained Support

**El Centro de la Raza**  
Equipment, Art Projects:  
*Día de los Muertos 2015/2016*, Heritage  
Projects: *Nuestra Historia, Nuestra Comunidad: Our*

*History, Our Community*,  
Building for Culture:  
*Plaza Roberto Maestas Multi-Cultural Community Center*

**\*Emerald City Ringers**  
Sustained Support

**EMP Museum**  
Sustained Support, Equipment

**\*Amy Enser Art**  
Projects: *The Buckaroos All-Male Revue Documentary*

**Josephine Ensign** Heritage  
Projects: *Skid Road: The Intersection of Health and Homelessness*

**\*Enumclaw Expo and Event Center, Enumclaw Fieldhouse** Building  
for Culture: *Interior and Exterior Repairs*

**Enumclaw Plateau Historical Society**  
Sustained Support

\*First-time grant recipient  
**\*Eritrean Association In Greater Seattle**  
Building for Culture:  
*Eritrean Community Kitchen*

**The Esoterics** Sustained Support

**Ethnic Heritage Council**  
Sustained Support

**Evergreen Association of Fine Arts** Sustained Support

**Evergreen City Ballet**  
Sustained Support, Equipment, Building  
for Culture: *ECB Facility Improvements*

**Evoke Productions**  
Sustained Support

**\*Kimberly Ewing** Open 4Culture



Poetry on Buses *Road Show* at  
Northwest Folklife, 2015,  
© Timothy Aguero Photography.

**Extraordinary Futures**  
Sustained Support

**Fall City Arts** Sustained Support

**Fall City Historical Society**  
Sustained Support

**Federal Way Chorale**  
Sustained Support

**Federal Way Harmony Kings** Sustained Support

**Federal Way Symphony**  
Sustained Support

**Donald Fels** Historic Site  
Specific: *Marie Louie Project*

**Filipino Cultural Heritage Society of Washington** Art  
Projects: *Pista Sa Nasyon 2015*

**\*Finn Hill Neighborhood Alliance** Open 4Culture  
**Floating Bridge Press**  
Sustained Support

**Flying House Productions**  
Sustained Support, Equipment

**Gabriela Frank** Art Projects:  
*Ugly Me*

**\*Margaret (Noel) Franklin**  
Art Projects: *Girl On A Road*

**Freehold Theatre Lab Studio** Sustained Support,  
Building for Culture: *New home for Freehold*

**Fremont Abbey Arts Center**  
Equipment

**Friends of Eastside Arts**  
Equipment

**Friends of Gas Works Park**  
Historic Site Specific

**\*Friends of Jimi Hendrix Park** Building for Culture:  
*Central Shelter at Jimi Hendrix Park*

**Friends of KEXP** Sustained Support, Equipment,  
Building for Culture: *KEXP's New Home at Seattle Center*

**Friends of Magnuson Park**  
Sustained Support

**Friends of Mukai** Sustained Support, Equipment,  
Building for Culture: *Mukai House Restoration*

**\*Friends of Recovery Café**

Emergency

**Friends of Seattle's Olmsted Parks** Sustained Support

**\*Friends of the Ballard Locks** Open 4Culture  
**Friends of the Conservatory**  
Sustained Support

**Friends of the Market**  
Sustained Support

**Friends of Third Place Commons** Equipment,  
Art Projects: *Music 101: Musical Genres Across Generations*

**Friendship Adventures**  
Open 4Culture

**From Within Nucleus**  
Art Projects: *ORIGINS OF DANCE: A Hindu Mythological Legend*

**Frye Art Museum** Sustained Support

**Gage Academy of Art**  
Sustained Support

**Gallery Concerts** Sustained Support

**Gamelan Pacifica** Sustained

Support

**Gay City Health Project**  
Sustained Support, Equipment

**\*Ari Glass** Art Projects:  
*The Sun Is Made Of Gold*

\*First-time grant recipient  
**Craig, Sunset Garage, North Bend** Landmarks  
Capital: *Storefront and Canopy Restoration*,  
Building for Culture: *Exterior Rehabilitation*

**\*Good Ground, Remlinger Farms, Carnation**  
Building for Culture: *Barn Restoration*

**John Grade** Art Projects:  
*Transplant*

**\*Joseph Grady, Neighbor-Bennett House, Fall City** Landmarks Capital: *Porch Restoration*

**Grand Illusion Cinema**  
Sustained Support

**Greater Kent Historical Society** Sustained Support





STUDY OF TIME AND  
MOTION: *connect/reposition*  
performed at the Georgetown  
Steam Plant, 2015 © Bruce Tom

Workboats at Lake Union Park,  
© 2015, Northwest Seaport.



**Greater Seattle Bureau of Fearless Ideas** Sustained Support, Equipment, Heritage Projects: *Our Universe of Greenwood: Youth Stories about Our History, Our Present, and Other Inspirations*

**Green River Community College Foundation** Sustained Support

**GreenStage** Sustained Support, Equipment

**Mandy Greer** Art Projects: *Labor Lost*

**\*Richelle Gribble** Art Projects: *MERGE: connectors, hubs, and links*

**Stephen Griggs** Historic Site Specific, *Listen to Seattle* Art Projects: *Panama Hotel Jazz Performance Extension*

**\*Miguel Guillen** Community Partner

**\*Ricardo Guity** Art Projects: *WAGARAOUN(Our*

*Ancestors Drum)*

**\*Wayne Gullstad, Neilson Barn, Snoqualmie Valley** Building for Culture: *Structural Repairs*

**\*Bridget Gunning** Art Projects: *Simulacra*

**\*Joy Hagen** Open 4Culture

**\*P. Mark Hannum, Columbia Motors Building, Seattle** Landmarks Capital: *Storefront Rehabilitation*

**\*Merna Ann Hecht** Open 4Culture

**Hedgebrook** Sustained Support

**Henry Art Gallery Association Inc** Sustained Support

**Highlands Council** Art Projects: *I AM Program by the PNWAAQ Association*

**Highline Botanical Garden Foundation** Sustained

Support

**Highline Community Symphonic Band** Sustained Support

**Highline Historical Society** Sustained Support, Collections Care, Heritage Projects: *Update Highline Historical Society website, Building for Culture: Highline Heritage Museum Building Renovation*

**Hi-Liners Inc** Sustained Support

**Historic Seattle** Sustained Support, Landmarks Capital: *Good Shepherd Center Window Restoration, Building for Culture: Completing the Rehabilitation of Washington Hall*

**Historical Society of Federal Way** Sustained Support, StEPs 4Culture Capacity Building Grant

**History Ink** Sustained Support, Historic Site Specific *Jazz Intoxication Project,*

Heritage Projects: *People, Places, and Resources: Looking at the History of Watersheds*

**Hollow Earth Radio** Sustained Support

\*First-time grant recipient

**Holocaust Center for Humanity** Sustained Support, Equipment, Heritage Projects: *Exploring King County Heritage through Holocaust Survivor Testimonies, Building for Culture: New Holocaust Center for Humanity Exhibit*

**\*Rudy Horn** Art Projects: *Out of the Rough*

**Wayne Horvitz** Historic Site Specific *11 Places for Richard Hugo*

**Rochelle House** Art Projects: *Fire: The New House Orchestra*

**\*Jason Huff** Art Projects: *The Clay Bin*

**Imagination Theatre** Art Projects: *Summer Workshop 2015*

**INTERIM CDA** Equipment

**International Capoeira Angola Foundation** Sustained Support

**\*Interstitial Theatre** Sustained Support

**Intiman Theatre** Sustained Support

**Valley Center Stage** Sustained Support

**Iranian American Community Alliance** Art Projects: *Seattle Iranian Festival*

**\*Iraqi Community Center of Washington** Open 4Culture

**Issaquah Historical Society** Sustained Support, Historic Site Specific *Hobos & Homelessness, Heritage Projects: Depot Playdate*

Series

**Jack Straw Cultural Center** Sustained Support, Building for Culture: *Accessible Bathrooms and HVAC Overhaul*

**James and Janie Washington Foundation** Sustained Support, Building for Culture: *Continued Improvements*

**Japanese Cultural and Community Center of Washington** Collections Care, Heritage Projects: *Interwoven: A Japanese Community Historical Perspective on Genji Mihara, Building for Culture: Phase II Facilities Preservation and Long Term Operations Plan*

**Jazz Night School** Sustained Support

**Jazz Night School** Sustained Support

**Jet City Improv** Sustained

Support

**\*Clare Johnson** Art Projects: *Art for Our Town*

**\*Ilze Jones, Globe Building, Seattle** Building for Culture: *Exterior Rehabilitation*

**\*Joyful! Noise** Sustained Support

**Melody Kadlub-Barr** Community Partner

**\*Satpreet Kahlon** Art Projects: *Craft School and Residency Professional Development*

**\*Jeffrey Kahrs** Heritage Projects: *Home and the Sea: Oral Histories of Fishermen from King County*

**\*Lara Kaminoff** Art Projects: *How to Pick a Fight*

**\*Jane Kaplan** Historic Site Specific *The Box House*

**Kenmore Community Club** Landmarks Capital:

*Siding Replacement, Building for Culture: Interior Rehabilitation*

**Kenmore Heritage Society** Collections Care

**Kent International Festival** Sustained Support

\*First-time grant recipient  
**Khambatta Dance Company** Sustained Support

**KidsQuest Children’s Museum** Sustained Support, Building for Culture: *KidsQuest Children’s Museum – Good to Grow Capital Campaign*

**Paul Kikuchi** Historic Site Specific *Songs of Nihonmachi*

**\*Dylan (D.K. Pan) Kim** Art Projects: *TIME IS MEMORY (Seattle Sky)*

**Eunice Kim** Art Projects: *Nontoxic Printmaking: Ten-Year Survey*





Testing new power hammer,  
© 2015, Pratt Fine Arts Center

Exhibition

**King County** Heritage Projects: *Responding to AIDS: Seattle-King County Department of Public Health Oral Histories*, Preservation Special Projects: *Red Brick Road Condition Inventory and Recommendations*

**Auburn Masonic Temple** Landmarks Capital: *Masonry Restoration*, Building for Culture: *Restoration of Three Storefronts*

**Kirkland Arts Center** Sustained Support, Building for Culture: *KAC Capital Improvements Project*

**Kirkland Choral Society** Sustained Support

**Kirkland Heritage Society** Sustained Support, Heritage Projects: *2016 Kirkland History Month*

**Kirkland Performance Center** Sustained Support

**\*Knot and Burl LLC** Historic Site Specific

**\*Daniel Kogita** Art Projects: *Diaries of a Mad*

**Paul Komada** Art Projects: *Monument in Memory: Abstract Alaskan Way*

**Kong Yick Investment Company Incorporated, West Kong Yick Building, Seattle** Preservation Special Projects: *West Kong Yick Preservation and Development Plan*, Building for Culture: *Canton Alley Curbs*

**\*Tia Kramer** Historic Site Specific *Study of Time & Motion*

**\*Stacey Kroeze, Barton House, Kent** Landmarks Capital: *Window*

Restoration

**Kubota Garden Foundation** Sustained Support, Collections Care, Heritage Projects: *Kubota Garden– A Timeless Refuge*

**Robb Kunz** Art Projects: *Shout Out*, Historic Site Specific *Sound Installation*

**Ladies Musical Club** Sustained Support

**Lake Union Civic Orchestra** Sustained Support

**Langston Hughes Performing Arts Institute** Sustained Support

**\*James Lapan** Art Projects: *The Ballad of Luis Sojo*

**\*Latino Theatre Projects** Open 4Culture

**Leadership Tomorrow** Community Partner

**\*Maggie Lee** Art Projects:

*The Journey of the Bell*  
**\*Samara Lerman** Historic Site Specific *Snoqualmie Depot Film*

**Lit Crawl Seattle** Art Projects: *Lit Crawl Seattle 2015*

\*First-time grant recipient  
**Live Aloha Hawaiian Cultural Festival** Art Projects: *Kahulanui*, Headlining *Entertainment*

**Live Girls! Theater** Sustained Support

**Living Voices** Sustained Support

**Luck Ngi Musical Club** Equipment, Art Projects: *Luck Ngi Musical Club 77th Anniversary Celebration*

**Macha Monkey Productions** Sustained Support

**Spike Mafford** Art Projects: *Los Mezcaleros*

**\*Justin Maggart** Art Projects: *Tres Reyes Magos– Bolero, Changüí & Son Cubano*

**Magnolia Chorale** Sustained Support

**Maple Valley Creative Arts Council** Sustained Support

**Maple Valley Historical Society** Sustained Support

**Maple Valley Youth Symphony Orchestra** Sustained Support

**\*Maritime Folknet** Sustained Support

**Ricki Mason** Art Projects: *Kitten N' Lou are... OVEREXPOSED!*

**Master Chorus Eastside** Sustained Support

**Maureen Whiting Dance** Sustained Support

**Max Aronoff Viola Institute**

Sustained Support  
**\*Lori A May** Art Projects: *Writer at Work: Where Passion Meets Profession*

**\*Kevin McKenna** Heritage Projects: *LGBTQ Activism in Seattle History Project*  
**Karen Meador** Heritage Projects: *Riverboat Round the Bend: Cargo, Commerce and Characters on the Inland Waterways of King County*

**Medieval Women's Choir** Sustained Support

**Mini Mart City Park** Building for Culture: *Mini Mart City Park*

**Mirinesse Women's Choir** Sustained Support

**Mirror Stage** Art Projects: *Mirror Stage's staged reading series*

**\*Irfan Mirza** Open 4Culture

**\*MLK F.A.M.E. Community Center** Equipment  
**Moisture Festival** Sustained Support

**Jordan Monez** Historic Site Specific *Plant 2014*

**\*Mount Baker Neighborhood Center for the Arts** Equipment, Art Projects: *Workshop and Reception 25th Anniversary of the American with Disabilities Act*

**Mount Baker Park Presbyterian Church** Building for Culture: *Masonry Restoration*

**\*Movimiento Afrolatino Seattle** Art Projects: *Afro-Latino Arts Education Season, Fall 2015*

**\*Moving Image Preservation of Puget Sound (MIPoPS)** Collections Care

**Mt. Si Artist Guild** Sustained Support, Emergency

**Multimedia Resources and Training Institute (MMRTI)** Heritage Projects: *A Video Documentary about Ethiopian Heritage in King County from Individual Ethiopian Perspectives*

\*First-time grant recipient  
**Museum of Flight** Sustained Support, Equipment, Building for Culture: *Museum of Flight Aviation Pavilion*

**Museum of History and Industry** Sustained Support, Collections Care, Art Projects: *The Legacy of Seattle Hip Hop Exhibition*, Heritage Projects: *Edible City: A Delicious History Exhibit*, Building for Culture: *Regional Heritage Collection Preservation Center*

**Music Center of the NorthWest** Sustained Support

Launch of 33.1 Spring Issue, © 2015 Arcade.







A Taste of Home, © 2015 Tay + Val.

**Music Northwest** Sustained Support

**Music of Remembrance** Sustained Support

**Music Works Northwest** Sustained Support, Building for Culture: *Music Works Facility Renovation Project*

**My World Dance Studio** Art Projects: *The Ziryab Collective: Celebrations Through Dance*

**The Nature Consortium** Sustained Support

**Neely Mansion Association** Sustained Support

**New Century Theatre Company** Sustained Support

**Nordic Heritage Museum** Sustained Support, Collections Care, Building for Culture: *The New Nordic Museum*

**North Bend Downtown Foundation** Art Projects: *Art and Artist Showings/Receptions* Heritage Projects *North Bend Visitor Information and Heritage Map*

**Northshore Performing Arts Center Foundation** Sustained Support

**Northwest African American Museum** Sustained Support, Art Projects: *Harmon and Harriet Kelley Art Collection: Art Workshop Series*, Building for Culture: *Strength and Security: Floor and Door Replacement at NAAM*

**\*Northwest Architectural League** Sustained Support

**Northwest Art Center** Sustained Support, Equipment

**Northwest Associated Arts**

Sustained Support

**Northwest Chamber Chorus** Sustained Support

**Northwest Choirs** Sustained Support

**Northwest Film Forum** Sustained Support, Equipment, Building for Culture: *Facility Renovation, phase III*

**Northwest Folklife** Sustained Support

**Northwest Girlchoir** Sustained Support

**Northwest Heritage Resources** Sustained Support

**Northwest Opera In Schools, Etc** Sustained Support

**Northwest Puppet Center** Sustained Support

**Northwest Railway Museum** Sustained Support,

Equipment, Landmarks Capital: *Locomotive 924 Boiler Restoration*, Heritage Projects *Train Shed Tour Package Enhancement*, Building for Culture: *Railway Education Center*

\*First-time grant recipient  
**Northwest Seaport** Sustained Support

**\*Northwest Sinfonietta** Sustained Support

**Northwest Symphony Orchestra** Sustained Support

**On the Boards** Sustained Support, Building for Culture: *HVAC Replacement*

**Amy O'Neal** Art Projects: *Opposing Forces Documentary Part 2*

**\*OneAmerica** Equipment

**Open Space for Arts and Community** Art Projects:

*PopART Putt Putt at Open Space*

**Orchestra Seattle / Seattle Chamber Singers** Sustained Support

**Sean Osborn** Art Projects: *Clarinetissimo 2015*

**Pacific Ballroom Dance** Sustained Support

**\*Pacific Hospital Preservation & Development Authority, Pacific Medical Tower, Seattle** Building for Culture: *Window Restoration*

**Pacific Musicworks** Sustained Support

**Pacific Northwest Ballet** Sustained Support, Building for Culture: *Pacific Northwest Ballet School at the Francia Russell Center Relocation/Construction Project*

**Pacific Northwest Railroad Archive** Sustained Support, Collections Care

**Pacific Science Center Foundation** Landmarks

Capital: *Yamasaki Courtyard Renewal Project – Staircase Repair*, Building for Culture: *Yamasaki Courtyard Renewal Project - Terrazzo Repair*, Special Events *POMPEII: The Exhibition*

**Pacific Sound Chorus** Sustained Support

**Shin Yu Pai** Art Projects: *Heirloom*

**Pat Graney Company** Sustained Support, Equipment

**Path with Art** Sustained Support

**\*Michelle Penaloza** Art Projects: *A Strange Constellation of Desires*

**Performing Arts Center Eastside** Building for Culture: *Tateuchi Center*

**Performing Arts Festival of the Eastside** Sustained Support

**Philharmonia Northwest** Sustained Support

**Phinney Neighborhood Association** Sustained Support, Building for Culture: *The Phinney Neighborhood Association's Campaign for Accessibility*

**Photographic Center Northwest** Sustained Support

**\*Plateau Area Writer's Association** Open 4Culture

**\*Erin Pollock** Art Projects: *#LookUpSeattle, A Portrait Project*

**Pony World Theatre** Sustained Support

**Pork Filled Players** Sustained Support

**Pottery Northwest** Sustained Support, Building for Culture: *Raise the Roof*

**Prabha Rustagi Memorial Trust** Sustained Support

**Pratt Fine Arts Center** Sustained Support, Building

for Culture: *An Arts-Based Community at Pratt Fine Arts Center*

**ProForum** Art Projects: *The Social Justice Film Festival*

\*First-time grant recipient  
**\*Project Room** Sustained Support

**\*Katherine Pryor** Art Projects: *Read Your Greens*

**Puget Sound Access / Carco Theatre** Building for Culture: *Carco Theatre Facilities Improvements*

**\*Puget Sound Educational Service District** Sustained Support

**Puget Sound Group of Northwest Painters** Sustained Support

**Puget Sound Maritime Historical Society** Sustained Support

**Queen Anne Historical**



Recess Monkey  
©2015 Kevin Fry





The Kenmore Community Club before siding is replaced, @2015  
Kenmore Community Club

**Society** Sustained Support, StEPs 4Culture Capacity Building Grant, Preservation Special Projects: *Expanded Queen Anne Historic Context Statement*

**\*Marilyn Raichle** Art Projects: *The Art of Alzheimer's: Changing the Way We Think about Alzheimer's - One Painting at a Time*

**Rain City Projects** Sustained Support

**Rain City Rock Camp for Girls** Sustained Support, Equipment

**Rain City Symphony** Sustained Support, Equipment

**\*Rainbow City Band** Art Projects: *Commissioned Musical Piece*

**Rainier Beach Merchants Association** Art Projects: *Art Walk*

**Rainier Chorale** Sustained Support

**Rainier Symphony** Sustained Support

**Rainier Valley Historical Society** Sustained Support

**Raven Chronicles** Sustained Support

**ReAct Theatre (Repertory Actors Workshop)** Sustained Support

**Redmond Association of Spokenword** Open 4Culture

**\*Redmond Chorale** Open 4Culture

**Redmond Historical Society** Heritage Projects: *Chicken Farm History Research, Interpretation to Community*

**Redmond Historical Society** Sustained Support

**Reel Grrls** Sustained Support

**\*Grant Rehnberg** Art Projects: *The Family Connection*

**Renton Annual Art Show** Art Projects: *Renton Annual Art Show*

**Renton Civic Theater** Sustained Support

**Renton Historical Society** Sustained Support, Equipment, Collections Care, Building for Culture: *Renovate Renton History Museum Lobby*

**Residential Construction** Community Partner

**Revive Skykomish LLC,** Facilities

**Tivon Rice** Art Projects: *Faades*

**Richard Hugo House** Sustained Support,

Building for Culture: *A permanent home for Hugo House*

**\*First-time grant recipient**  
**Richmond Masonic Center, Shoreline** Building for Culture: *Foundation Repairs*

**Ripple Productions** Sustained Support

**River Winds Band** Sustained Support, Equipment

**Room Circus Medical Clowning** Sustained Support

**Rosebud Children's Theatre Conservatory** Sustained Support

**Gregory Ruby** Art and Heritage Projects: *Syncopated Classic: Rediscovering the Lost Compositions of Seattle*

*Jazz Pioneer Frank D. Waldron*

**Sammamish Heritage Society** Preservation Special Projects  
*Sammamish Historic Resource Survey and Inventory, Building for Culture: Jacob and Emma Reard House Rehabilitation*

**Sammamish Symphony Orchestra Association** Sustained Support

**Sarah Samudre** Art and Heritage Projects: *Promised Land*

**Sand Point Arts and Cultural Exchange** Equipment

**Sapience Dance Collective** Art Projects: *CONVERGE 2016*

**Savani Latin Jazz Quartet** Art Projects: *Participatory King County Tour*

**Dennis Schilling, Alki Homestead, Seattle**

Landmarks Capital: *Rooftop Sign Restoration, Building for Culture: Roof Replacement*

**\*First-time grant recipient**  
**School of Acrobatics & New Circus Arts (SANCA)** Sustained Support, Equipment

**Mary Scott** Art Projects: *The SOLO(s) Project*

**Sea Mar Community Health Centers** Art Projects: *Fiestas Patrias 2015, Building for Culture: Sea Mar Latino History and Cultural Center*

**Seattle Architectural Foundation** Sustained Support, Equipment, Emergency

**Seattle Art Museum** Sustained Support, Equipment, Collections Care, Building for Culture: *SAM Asian Art Museum Renovations*

**Seattle Arts and Lectures**

Sustained Support, Equipment

**Seattle Asian American Film Festival** Sustained Support

**SPokenword LAB SPLAB** Art Projects: *Cascadia Innovative Poetry Panels*

**Seattle Center Foundation** Art Projects: *Fest l 2015*

**Seattle Chamber Music Society** Sustained Support  
**Seattle Cherry Blossom and Japanese Cultural Festival Committee** Sustained Support

**\*Seattle Children's Chorus** Sustained Support

**Seattle Children's Museum** Sustained Support

**Seattle Children's Theatre** Sustained Support, Building for Culture: *Renovation of SCT's HVAC Systems*

**Seattle Chinatown**

**International District Preservation and Development Authority (SCIDpda)** Sustained Support

**\*Seattle Chinese Chorus** Open 4Culture

**\*First-time grant recipient**  
**\*Seattle City Light, Georgetown Steam Plant** Building for Culture: *Historic Concrete Restoration*

**Seattle Classic Guitar Society** Sustained Support

**\*Seattle Collaborative Orchestra** Art Projects: *Listen to the Girls*

**Seattle Contemporary** Sustained Support

**Seattle Festival Orchestra** Sustained Support

**Seattle Gdynia Sister City Association** Art Projects: *23rd Seattle Polish Film Festival*



Red bag, © 2015 White River Valley Museum.





Highline Historical Society collections used as a set for UFO film about Burien, © 2015, Nancy Salguero McKay.

- Seattle Genealogical Society

Sustained Support
- Seattle Gilbert and Sullivan Society

Sustained Support
- Seattle Glee Clubs

Sustained Support
- \*Seattle Heritage Emergency Response Network (SHERN)

Equipment
- \*Seattle Indian Health Board

Art Projects: *Spirit of Indigenous People's Day*
- \*Seattle JazzED

Sustained Support
- Seattle Jewish Chorale

Sustained Support
- Seattle Jewish Film Festival

Sustained Support
- \*Seattle Kokon Taiko

Art Projects: *35th Anniversary Concert and Workshop*
- \*Seattle Ladies Choir

Sustained Support
- Seattle Latino Film Festival

Art Projects: *7<sup>th</sup> Annual Seattle Latino Film Festival*
- Seattle Modern Orchestra

Sustained Support
- Seattle Music Partners

Sustained Support, Equipment
- Seattle Musical Theatre

Sustained Support
- Seattle Opera

Sustained Support, Equipment, Building for Culture: *Permanent Home for Seattle Opera*
- Seattle Peace Chorus

- Sustained Support
- Seattle Philharmonic Orchestra

Sustained Support
- Seattle Pro Musica

Sustained Support, Equipment
- Seattle Public Theater

Sustained Support
- Seattle Repertory Jazz Orchestra

Sustained Support
- Seattle Repertory Theatre

Sustained Support, Equipment, Building for Culture: *PONCHO Forum Renovation*
- Seattle Scenic Studios

Sustained Support
- Seattle Seachordsmen

Sustained Support
- Seattle Shakespeare Company

Sustained Support
- Seattle Symphony Orchestra

Sustained Support, Building for Culture: *Soundbridge 2.0*
- Seattle Theatre Group

Sustained Support, Landmarks Capital: *Paramount Theatre Masonry Repairs*, Building for Culture: *Seattle Theatre Group Capital Priority Project 2015*
- Seattle True Independent Film Festival

Sustained Support
- \*Seattle Wind Symphony

Sustained Support
- Seattle Women's Jazz Orchestra

Sustained Support
- Seattle World Percussion Society

Sustained Support
- Seattle Youth Symphony Orchestras

Sustained Support
- \*SeattleDances

Sustained Support
- SecondStory Repertory

Sustained Support
- \*Che Sehyun Art Projects:

*Grandma Project (HOPE)*
- Seward Park Clay Studio

Sustained Support
- \*Benson Shaw Preservation Special Projects:

*Ballard Street Name Mosaic Preservation Project*
- Shoreline Historical Museum

Sustained Support, Heritage Projects: *Commemoration of Traditional Duwamish Cranberry Place at Ronald Bog*, Building for Culture: *New Collections Facility and Research Center*

- \*First-time grant recipient
- Shoreline-Lake Forest Park Arts Council

Sustained Support
- Short Run

Art Projects: *Short Run Comix and Arts Festival 2015 and 2016*
- Shunpike

Sustained Support
- Si View Metropolitan Park District, Tollgate Farmhouse, North Bend

Building for Culture: *Exterior Rehabilitation*
- SIFF

Sustained Support, Building for Culture: *Upgrades to the Uptown*



Prototype for Lake to Sound Trail Kit of Parts, © 2015 Jenny Heishman and Kurt Kiefer.

- Simple Measures

Sustained Support
- SIS Productions

Sustained Support
- Sketchfest

Sustained Support
- Skykomish Historical Society

Sustained Support
- Skykomish Masonic Temple

Building for Culture: *Roof Replacement*
- \*Skyway Solutions

Open 4Culture
- Robert Smith, Auburn Carnegie Library

Landmarks Capital: *Exterior Door Restoration*
- Snoqualmie Valley Historical Society

Sustained Support, Emergency, Collections Care, Heritage Projects: *Ada Hill: Continuing the Stories,*
- SVHS
- SOIL

Sustained Support
- Ellen Sollod

Historic Site Specific *Lake Washington Palimpsest*
- \*Somali Family Safety Task Force

Open 4Culture
- Sound Theatre Company

Sustained Support
- SouthEast Effective Development (SEED)

Sustained Support, Equipment, Building for Culture: *Rainier Valley Radio / KVRU Studio Construction*
- Southwest Seattle Historical Society

Sustained Support, Collections Care, Preservation Special Projects: *Coming Home to the Homestead*
- Space.City

Sustained Support
- \*Coco Spadoni

Open 4Culture
- Spectrum Dance Theater

Sustained Support
- Steamer Virginia V Foundation

Sustained Support, Equipment, Building for Culture: *Reframing the Stern of the SS VIRGINIA V*
- Stone Soup Theatre

Sustained Support
- Stroum Jewish Community Center

Equipment
- Studio East Training for the Performing Arts

Sustained Support, Equipment
- Sundiata African American Cultural Association

Art Projects: *Festival Sundiata Black Arts Fest*
- 2015
- Suyama Space

Sustained Support
- \*TAF

Open 4Culture
- \*First-time grant recipient
- Talented Youth

Sustained Support
- Taproot Theatre Company

Sustained Support, Equipment
- Tasveer

Art Projects: *10th Seattle South Asian Film Festival*
- TeenTix (Seattle Center Foundation)

Sustained Support
- Ann Teplick

Art Projects: *Snapped into Fractions*
- \*Thalia Symphony Orchestra

Sustained Support
- Theater Schmeater





Robert Hardgrave, *Oxbow*, 2014. Work on Paper. King County Public Art Collection.

- Sustained Support

**Theatre Battery Art**  
Projects: *2015 Season — A MAZE*

**Theatre Off Jackson**  
Sustained Support

**Theatre Puget Sound**  
Sustained Support

**TheFilmSchool** Sustained Support

**Thistle Theatre**  
Sustained Support, Equipment

**Three Dollar Bill Cinema**  
Sustained Support

**Tibetan Association of Washington Art** Projects: *TibetFest 2015*

**Tlaloktekuhtli Art** Projects: *Dia De Los Muertos: Indigenous Cultural Renovation in South Park*

**Tolt Historical Society**  
Sustained Support
- \*Totem Star** Sustained Support

**Town Hall Association**  
Sustained Support, Building for Culture: *The Historic Restoration of Town Hall Seattle*

**Town of Skykomish**  
Building for Culture: *Skykomish Depot Rehabilitation*

**\*Linda Tsatsanis Art**  
Projects: *When Miles met Monteverdi*

**Twelfth Night Productions**  
Sustained Support

**UMO Ensemble** Sustained Support

**Unexpected Productions**  
Sustained Support

**Unified Outreach**  
Sustained Support

**University Heights Center for the Community**

- Association** Sustained Support, Emergency, Equipment, Building for Culture: *Performance Hall Restoration*
- Upper Bear Creek Community Council Art**  
Projects: *Music in the Park at Cottage Lake*
- Urban ArtWorks** Sustained Support
- UW Meany Hall for the Performing Arts** Sustained Support
- UW Press** Heritage Projects: *Classical Seattle*, by Melinda Bargreen
- VALA Eastside** Sustained Support
- Valse Cafe Orchestra and Company** Sustained Support
- \*VanFest** Open 4Culture
- Vashon Allied Arts**  
Sustained Support, Building for Culture: *Vashon Center for the Arts*
- Vashon Opera** Sustained Support
- Vashon Park District, Point Robinson Light Station** Landmarks Capital: *Downspout and Window Repairs*
- Vashon-Maury Island Heritage Association**  
Sustained Support, StEPs 4Culture Capacity Building Grant, Building for Culture: *Foundation Replacement and Seismic Mitigation*
- Vedic Cultural Center Art**  
Projects: *Ananda Mela 2015 : Joyful Festival of India*
- \*Vela Luka Cultural Productions Art**
- Projects: *31st Annual July 4th Naturalization Ceremony*
- Velocity Dance Center**  
Sustained Support, Building for Culture: *Studio/Theater Health and Safety Upgrades, plus Improved Box Office*
- Vera Project** Sustained Support
- Village Theatre** Sustained Support, Building for Culture: *Village Theatre’s New Production Warehouse*
- Rosa Vissers Art**  
Projects: *Anatomy of an Accident*
- Voice of Vashon**  
Equipment, Building for Culture: *Community Access Storefront Studio*
- Wa Sang Foundation, Rex Apartment Building, Seattle** Landmarks Capital: *Roof Replacement*, Building for Culture: *Comprehensive Exterior Rehabilitation*
- \*First-time grant recipient Cynthia Walker, North Bend Theatre** Landmarks Capital: Front Door Replacement
- Leah Warshawski Art**  
Projects: *BIG SONIA Documentary*
- Washington Alliance for Arts Education** Sustained Support
- Washington Ensemble Theatre** Sustained Support
- Washington Lawyers for the Arts** Sustained Support

- Washington Museum Association** Community Partner
- Washington State Arts Alliance** Community Partner
- Washington State Arts Commission** Community Partner
- Washington State Jewish Historical Society**  
Sustained Support, Collections Care, Heritage Projects: *Passport to Washington*, Building for Culture: *Exhibit Gallery*
- Washington State Jewish Historical Society** StEPs 4Culture Capacity Building Grant
- \*Washington State Labor Council** Building for Culture: *Jackson Street Workers’ Mural*
- Washington Trust for Historic Preservation**  
Sustained Support, Preservation Special Projects: *Youth Heritage Project (YHP) SWOT Team*, Building for Culture: *Stimson-Green Mansion Building & Site Preservation*
- West Hill Community Association** Sustained Support
- West Seattle Community Orchestra** Sustained Support
- Whim W’Him** Sustained Support
- White Center Community Development Association**  
Art Projects: *Immigrant Integration through Visual Storytelling*
- White River Valley Museum** Sustained
- Support, Art Projects: *SERVICE INK, Veterans’ Tattoos and Their Stories*, Collections Care, Heritage Projects: *In The Bag, the History of Women’s Purses and Their Contents*, Building for Culture: *Renovating a Community Museum to Enhance Interest and Accessibility*
- \*Nancy Whitlock Art**  
Projects: *Light & Dark—A to Z*
- David B. Williams Art**  
Projects: *Street-Smart Walks: Exploring Seattle’s Natural and Human History*
- Wing Luke Museum of the Asian Pacific American Experience** Sustained Support, Equipment, Collections Care, Heritage Projects: *Khmer American Community Project*, Building for Culture: *Storage System, Safekeeping The Wing’s Collections*
- Wintergrass Music Festival**  
Sustained Support
- \*Inye Wokoma** Heritage Projects: *A Life in Green and Black*
- Women’s University Club of Seattle Foundation** Building for Culture: *Restoration of Original Windows in Clubhouse*
- Woodinville Heritage Society** Sustained Support
- Woodinville Repertory Theatre** Sustained Support
- World Kulturz Art**  
Projects: *Welcome to Our*



Naomi Wachira, © 2015 Jason Tang.

- Native Land Powwow and Coastal Cultures Celebration*
- \*Robert S Yerkes** Building for Culture: *McClellan Building Interior and Facade Restoration and Roof Replacement*
- YMCA of Greater Seattle**  
Art Projects: *Community and Diversity: A Teen Art Installment Project*
- Young Shakespeare Workshop**  
Sustained Support, Equipment
- Youth Theatre Northwest**  
Sustained Support
- \*Ben Zamora Art** Projects: *MANDALA*
- zoe/juniper** Sustained Support
- Jennifer Zwick Art** Projects: *Gallery4Culture solo show*
- \*First-time grant recipient**





Jane Tsong, ...no beginning  
no end/circle the earth/  
blessed water/blood of life...,  
© 2011 stainless steel, audio  
(detail).



Urvasi Dance  
© 2013 Survo Datta

**Public Art: Artists,  
Partners, and  
Fabricators**

2312 Gallery  
Aaron Counts  
Africatown Center for  
Education & Innovation  
Al Price  
Aletheia Wittman  
Andre Franklin  
Arts Corps  
B-Force Security  
Benson Vess  
Buster Simpson  
Caedmon Cahill  
Celeste Cooning  
Claire Thornton  
Claudia Fitch  
Daemond Arrindell  
Diana Falchuk  
Diane Korf  
Eli Hastings  
Elizabeth Gahan  
Gage Hamilton  
Garfield Community Center  
Jenny Heishman and Kurt  
Kiefer

Jill Patnode  
JoeAnne Taylor  
Kate Sweeney  
Katherine Hurley  
Lara Davis  
Leo S. Berk  
Madrona Digital  
Marcel Purnell  
Marvin Oliver  
Moshier Community Arts  
Center  
Nikkita Oliver  
Omana Imani  
Otieno Terry  
ProGreen Landscaping  
Revelry Media & Methods  
Rich Lehl  
Riot Creative Imaging  
Robert Horner  
Sans façon (Charles Blanc  
and Tristan Surtees)  
Sharon Williams  
Shontina Vernon  
Team Child  
Timothy Aguero  
Tina Hoggatt  
Tory and Eroyn Franklin  
Wesley Saint Clair

Youth Undoing Institutional  
Racism

**Touring Arts Roster**

The Westerbork Serenade  
Abráce  
Eva AbramRainwater  
Storytelling  
The Acrobatic Conundrum  
Adefua African Music &  
Dance Company  
ajusticenetwork/Splinter  
Dance Company  
Alchymeia  
Cynthia Alexander  
Alleyoop  
Alma Villegas y Azucar  
Mario Amaya  
Ambience Jazz Quartet  
Amontaine Aurore  
Barbie Anaka  
Kofi Anang  
Ancient Sounds  
Anzanga Marimba  
Ensemble  
Apex Aerial Arts  
Aunt Dottie's Sing-Along

Cabaret  
Bailadores de Bronce  
Matt Baker  
Suntonio Bandanaz  
The Barrelhouse Jive Cats  
Christa Bell  
Maggie Bennett  
Billet-Deux  
Billy Ray Band  
Black Stax  
The Bobs  
Bonnie Birch  
Book-It  
Bottom Line Duo  
The Cabiri  
Rose Cano-North-South  
Conexions  
Julie Cascioppo  
Debbie Cavitt  
Chamber Opera Northwest  
Choroloco  
CocoLoco  
Concert Imaginaire  
Meredith Connie  
Cordaviva  
Cornucopia Concert Band  
Correo Aereo  
Crumac

Cuadro Azahares  
Ann Cummings  
Cyrus Khambatta Dance  
Company  
Daana Quartet  
DE CAJ&N Project  
The Debaucherauntes  
Debi Cahtterjee Duo  
Del Rey  
Dos Guitarras  
Due Belle Voci  
Dunava  
Duo En  
Duo Finelli  
Geisa Dutra  
The Elnah Jordan  
Experience  
Emerald City Jug Band  
EntreMundos Quarteto  
Helene Eriksen  
The Esoterics  
Andre Feriante  
Fisher Ensemble  
Flamenco Gitana  
Franchesska Berry and Som  
La Bi Joli  
Fred Hoadley Trio  
From Within Nucleus

Gansango Dance Company  
Hagucha Garinagu  
Reggie Garrett & the  
Snakeoil Peddlers  
Global Heat  
Global Village  
Reginald Goings  
Good Co  
Hammill-Davis Duo  
Hammon Esvelt Quintet  
Gin Hammond/Returning  
the Bones  
Ed Hartman  
Henry Cooper Band  
Lou Henry Hoover  
Mark Hilliard Wilson  
Hopscotch  
Neil Hubbard  
Ben Hunter & Joe Seamons  
Srivani Jade  
Jangles  
Jet City Improv/Wing-it  
Productions  
Joy Mills Band  
Juliana & PAVA  
Karin Kajita  
Jonathan Kingham & Ryan  
Shea Smith

Kings of Swing  
JaWaan LaRue  
Lelavision  
Cheryse Lewis  
Little Sara and the  
NightOwls  
Living Voices  
The Lonely Coast  
Longstride  
Mambo Cadillac  
MariAnna Trio  
Mariide  
Mark Whitman Band  
Mary Wiles Show  
Greta Matassa  
Leslie McMichael  
Eduardo Mendonca and  
Show Brazil!  
Message From Guinea  
Mighty Tiny Band  
Miho & Diego Duo  
Mikey Mike The Rad  
Scientist  
Miss Rose & Her Rhythm  
Percolators  
Kibibi Monie  
Eva Moon  
Mary Margaret Moore

Quinton Morris  
Nadira  
New Age Flamenco  
Mercedes Nicole  
Michael Nicolella  
Northwest Tap Connection  
Old Dogs New Tricks  
One World Taiko  
Orchestra Zarabanda  
Jim Page  
Michael Partington  
Susan Pascal  
Pickled Okra  
Angelo Pizarro Pizarro  
Playworks  
Pony Boy All-Star Big Band  
Rat City Brass  
Recess Monkey  
Reptet  
Rick Hartman the Toy Maker  
Rick May  
Rodger Pegues  
Arturo Rodriguez  
Roger Fernandes  
The Rootsters  
Leslie Rosen Pyrosutra  
Rouge  
Ruze Dalmatinke Orchestra





Seattle Women's Steel Pan Project  
© 2014 Christopher Nelson.

Ruzivo  
Sabura  
George Sadak  
Salt Horse  
Sapience Dance Collective  
Savani World Jazz  
Savannah Fuentes  
Flamenco  
Seattle Shakespeare  
Company  
The Seattle Women's Steel  
Pan Project  
Selam Band  
Aaron J. Shay  
Mary Sherhart & Balkan  
All-Stars  
Shumba Youth Marimba  
Ensemble  
Smilin' Scandinavians  
Matt Smith  
SMQ  
Maya Soleil  
Sonando  
The Sound of the Northwest  
Soyaya  
Thaddeus Spae  
Stanislove  
Steve Griggs' Panama  
Hotel Jazz  
Stone Soup Theatre  
Supersones

Suzanna & Friends  
Christian Swenson  
Taproot Theatre Company  
The Tarentellas  
Te Fare O Tamatoa  
Theater Simple  
Thione Diop Yeke Yeke  
Thistle Theatre  
Stokley Towles  
Awilda Verdejo  
Brian Vogan  
Naomi Wachira  
Paul "Che oke ten"  
Wagner  
Judd Wasserman  
Storme Webber  
James Whetzel  
Charlie Williams  
Sharon Nyree Williams  
Greg Williamson Quartet  
Willrich Darrius Willrich  
Maritess Zurbano

On-Site Reviewers

Chase Anderson  
Rachel Atkins  
Sarah Bloom  
Easton Branam  
Tina Callanan  
Kim Camara  
Nancy Clendaniel

Caitlin Cordell  
Monet Curnutt  
Rebeca Dawn  
Ella Dorband  
Jeremy Ehrlich  
Hannah Frelot  
Lynne Handlos  
Naghma Husain  
Laura Hutchinson  
Sibyl James  
Chris Jeffries  
Andy Jensen  
Olivia Johnson  
Ann Kendall  
Kelsey Larson  
Zhenya Lavy  
Dan Mayer  
Rachael McAlister  
Georgia McDade  
Sally McDonough  
Adina Menashe  
Tracy Montes  
Erika Nelsen  
Lola Peters  
Kendra Potoshnik  
Nancy Pringle  
Jessica Rubenacker  
Mary Sherhart  
Genie Sheth  
Allison Shirk  
Michiko Tanaka

Obadiah Terry  
Courtney Theis  
Jennifer Vierling  
Cynthia White  
Barbara Winkelman



Poetry on Buses station  
©2015 Timothy Aguero Photography



# Financials

\$47,934,325 total funding requested

\$30,228,138 total funding awarded

	Actuals 2015	2014	2013
REVENUES			
Lodging Tax Revenue (1)	\$21,916,753*	\$ —	\$1,784,564
King County Public Art Revenue	2,517,831	790,922	1,380,380
King County Appropriations	—	820,000	70,000
Public Art Consulting Revenue	53,766	31,345	56,566
Investment Earnings (Loss)	179,687	304,594	(398,005)
Miscellaneous Other	140,682	51,115	68,640
TOTAL REVENUES (2)	\$24,808,879	\$1,997,976	\$2,962,145

	Actuals 2015	2014	2013
EXPENDITURES & OTHER USES			
Arts & Heritage Grant Programs	\$6,554,804	\$6,476,411	\$6,655,287
Public Art Projects	874,337	1,477,414	1,490,042
Debt Service (3)	179,900	253,525	251,963
Management & General Supporting Services	516,428	564,214	518,296
TOTAL EXPENDITURES & OTHER USES (2)	\$8,125,470	\$8,771,564	\$8,915,588

	Actuals December 31, 2015	December 31, 2014	December 31, 2013
FUND BALANCES			
General Fund	\$1,755,306	\$1,699,955	\$1,144,658
Lodging Tax Special Revenue Fund	5,179,884	4,239,757	4,002,558
1% for Art Special Revenue Fund	4,602,526	2,931,340	3,764,257
Cultural Special Account Fund	52,069,439	38,052,694	44,785,861
TOTAL FUND BALANCES	\$63,607,155	\$46,923,746	\$53,697,334

NOTE: 2015 financial information is based on unaudited fund financial statements. Requests for the most recent complete audited financial report should be addressed to 4Culture's finance department at 4Culture, 101 Prefontaine Place S, Seattle, WA 98104.

(1) Current legislation temporarily discontinues the use of lodging tax receipts for cultural purposes in King County until 2021 except for \$3 million in deferred King County lodging tax receipts expected to be received in 2016. The Cultural Special Account is the designated source of funds for arts and heritage grant programs during 2016-2020. \*Figure represents one-time revenue from the early retirement of the King Dome bond.

(2) Total revenues and expenditures differ on an annual basis due to timing factors in the inflows and outflows of the various programs' financial resources

(3) Required payments to King County for principal and interest on County debt issued for arts and heritage cultural facilities grants prior to the creation of 4Culture.





“When 4Culture checks arrive we all get happy.  
I love the broad distribution of support for our  
community—and being a part of that.”

-Julie Stein, Burke Museum