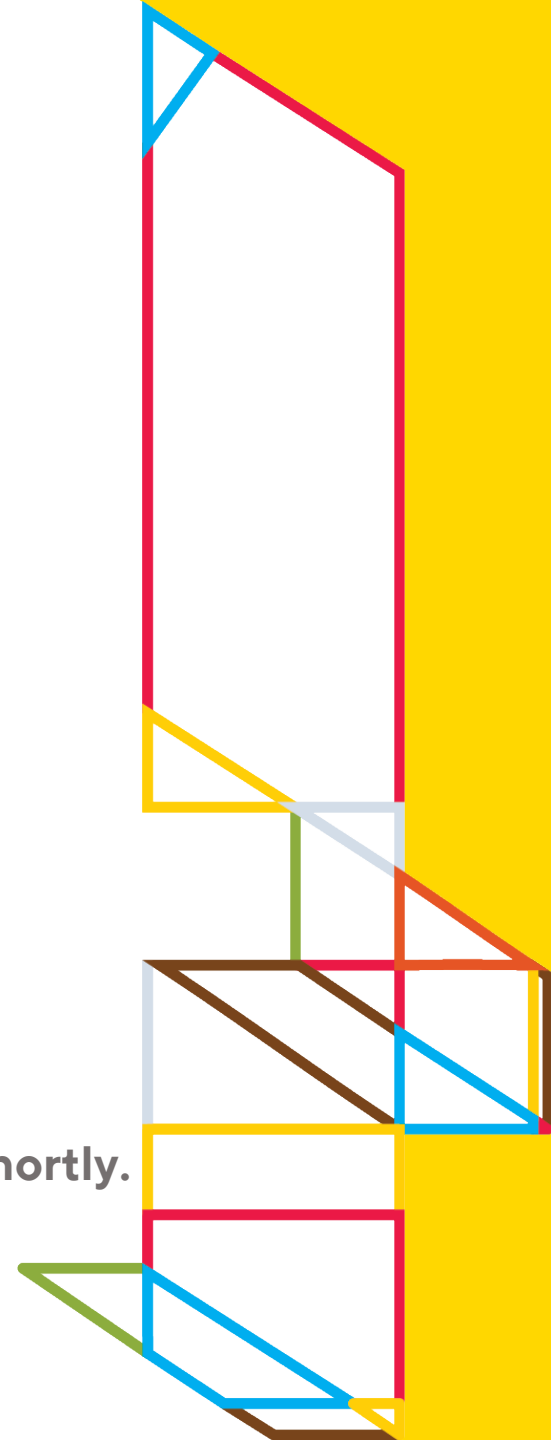


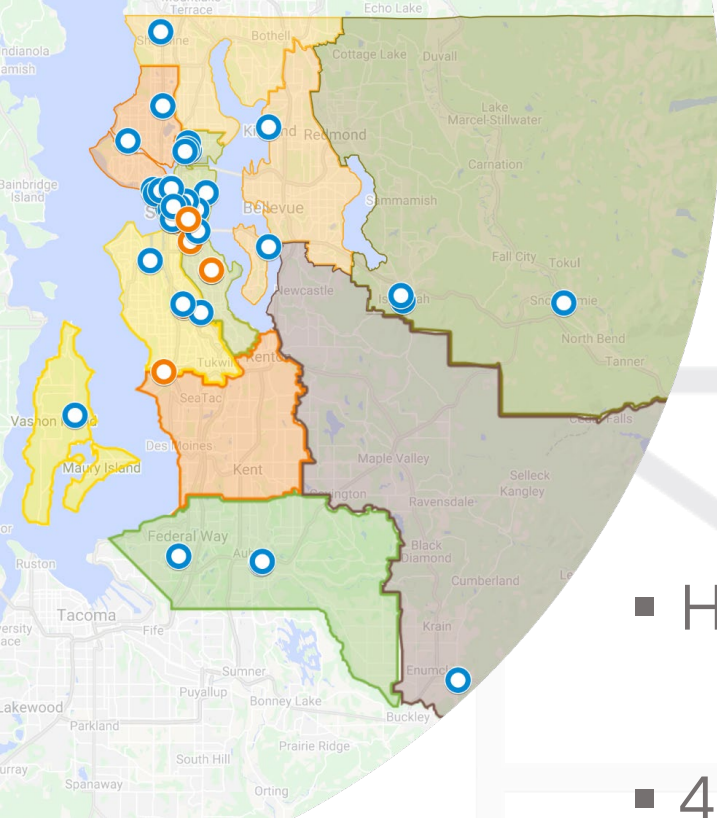


DOORS OPEN: WHAT WE KNOW NOW



Welcome! The information session will begin shortly.
February 6, 2024





INFO SESSION TOPICS

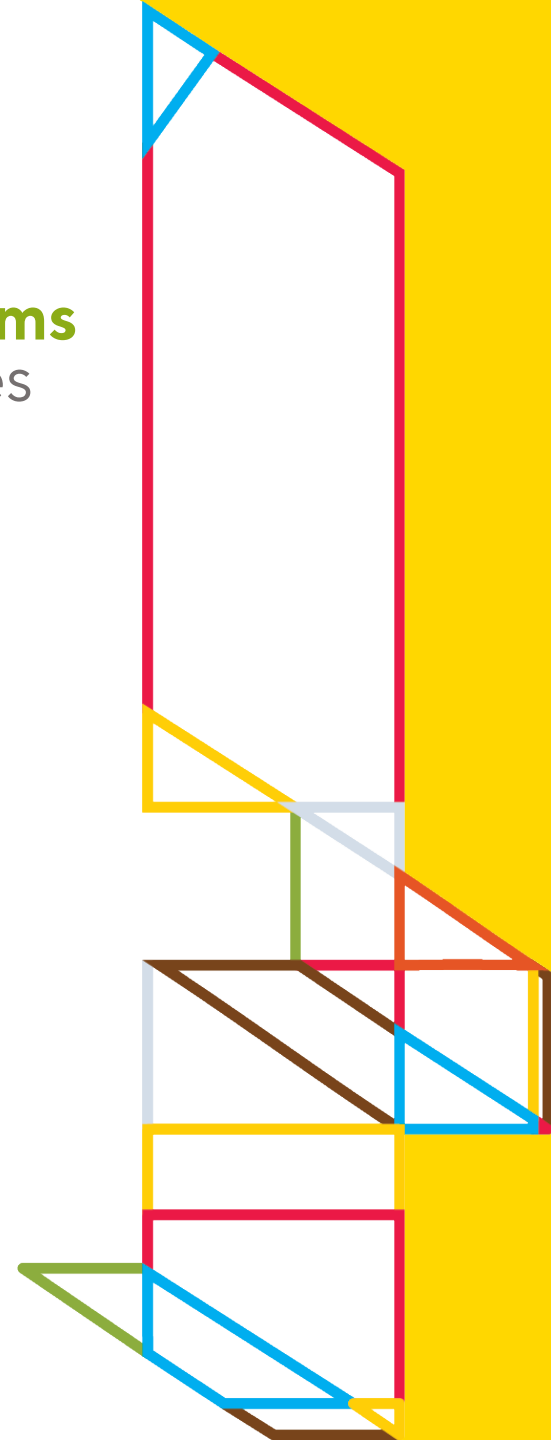
- History of Cultural Access Washington legislation
- 4Culture's Preparation
- Doors Open Program Overview
- Path to Implementation





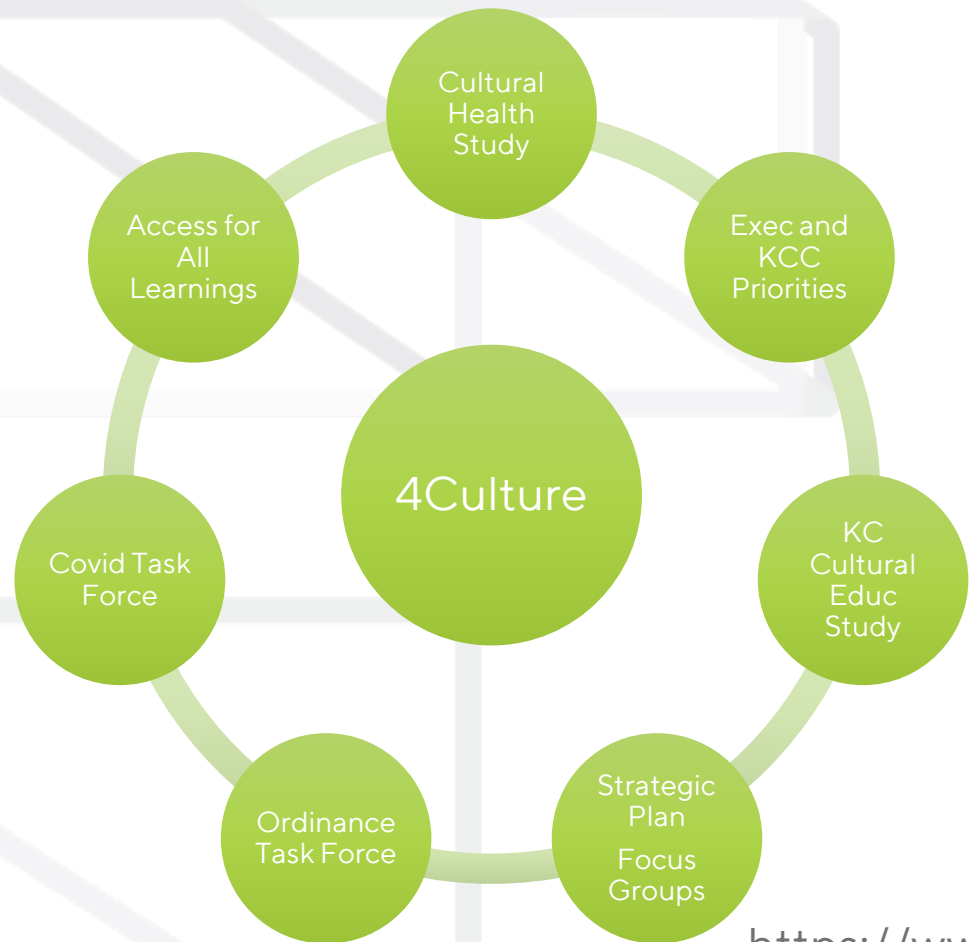
HISTORY OF CAWA LEGISLATION

- In 2015, the Washington State Legislature passed legislation **allowing counties and cities to create cultural access programs** by local ordinance and fund them through voter-approved sales or property tax levies. King County is limited to sales tax for cultural access.
- In 2017, the Access for All went to the ballot and **narrowly lost 49% to 51%**.
- In March 2020. **The bill stripped the complex statutory requirements for King County's allocation of cultural access funds** that ran counter to 4Culture's funding model by guaranteeing percentages of the funds to organizations of a certain size.
- In early 2023, the WA State legislature approved a bill that **allowed King County to impose this tax by councilmanic authority**.



4 CULTURE PREPARATION:

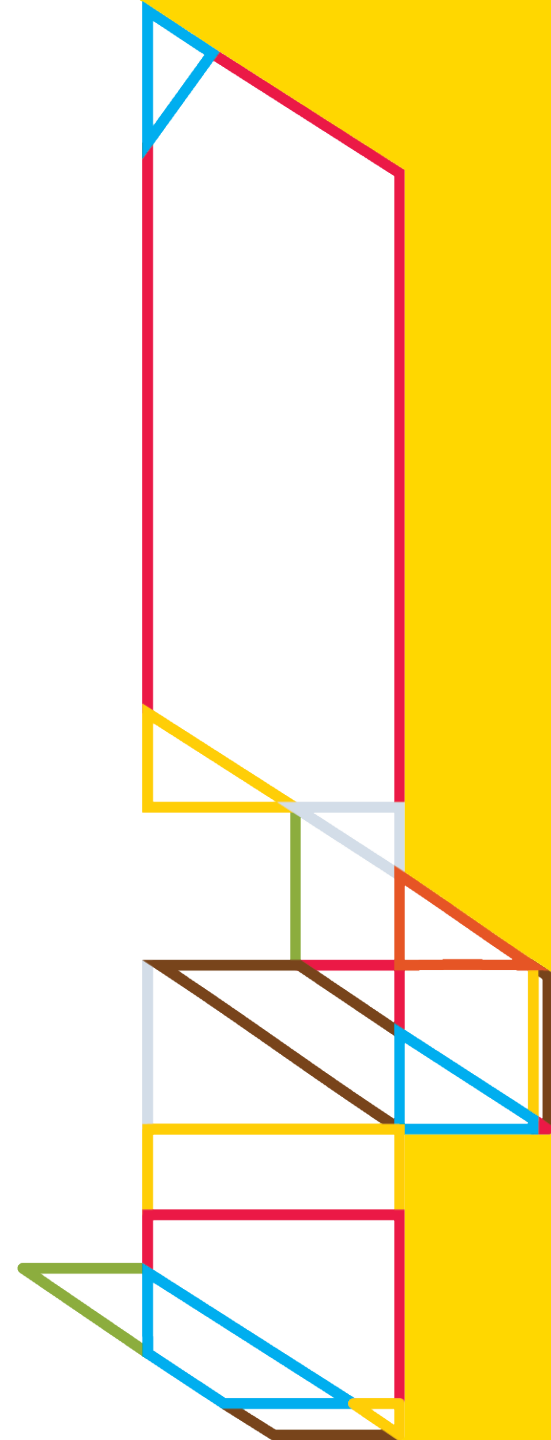
A POSTURE OF LISTENING





BROAD LEARNINGS

- 4Culture provides **stability** and predictability to the cultural sector.
- Expand **accessibility** to cultural offerings and experiences.
- Increase equitable access to **cultural space**.
- Foster **collaboration and partnership** among practitioners and organizations.
- We must lead with a **racial equity** lens.



4 THE FUTURE FUNDING MODEL: 2019

- Affirmed value and necessity of existing funding programs.
- Formalized demographic data collection processes to understand who is being served and who isn't.
- Equity Investments for all programs.
- Added four new programs



WHAT MUST WE DO DIFFERENTLY?

Stability

Special Projects

- Projects
- Cultural Equipment
- Community Partners
- Arc Artist Fellowships
- Creative Consultancies
- Touring Arts Roster
- Collections Care
- T.I.P.S. Mini Grants
- Open 4Culture
- Storefront Media Gallery

Cultural Facilities

- Cultural Facilities
- Landmarks Capital
- Building for Culture
- Building for Equity
- Emergency Opportunities
- Barn Again
- Preservation Action Fund

Sustained Support

- Arts SS
- Heritage SS
- Preservation SS

Public Art

- Commissions
- 4C Gallery
- KC Collection

Accessibility

Cultural Planning

Growth Accomodation

Racial Equity

- Startups
- Public Free Admission
- Public School Access
- Countywide Initiatives

Necessary Change



DOORS OPEN OVERVIEW

6 Competitive Funding Programs (2025-2031)

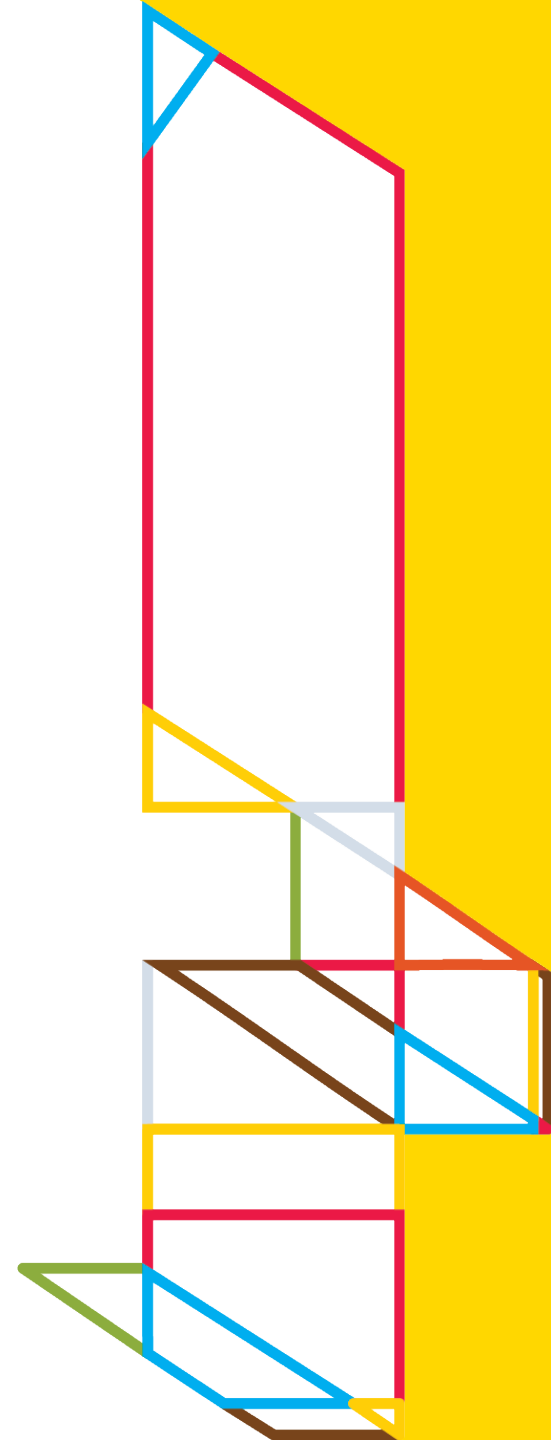
- ✓ Operating Support
- ✓ Building for Equity (facilities)
- ✓ Public School Cultural Access
- ✓ Public Free Admission
- ✓ Countywide Initiatives
- ✓ Launch (startups)





SUSTAINED/OPERATING SUPPORT

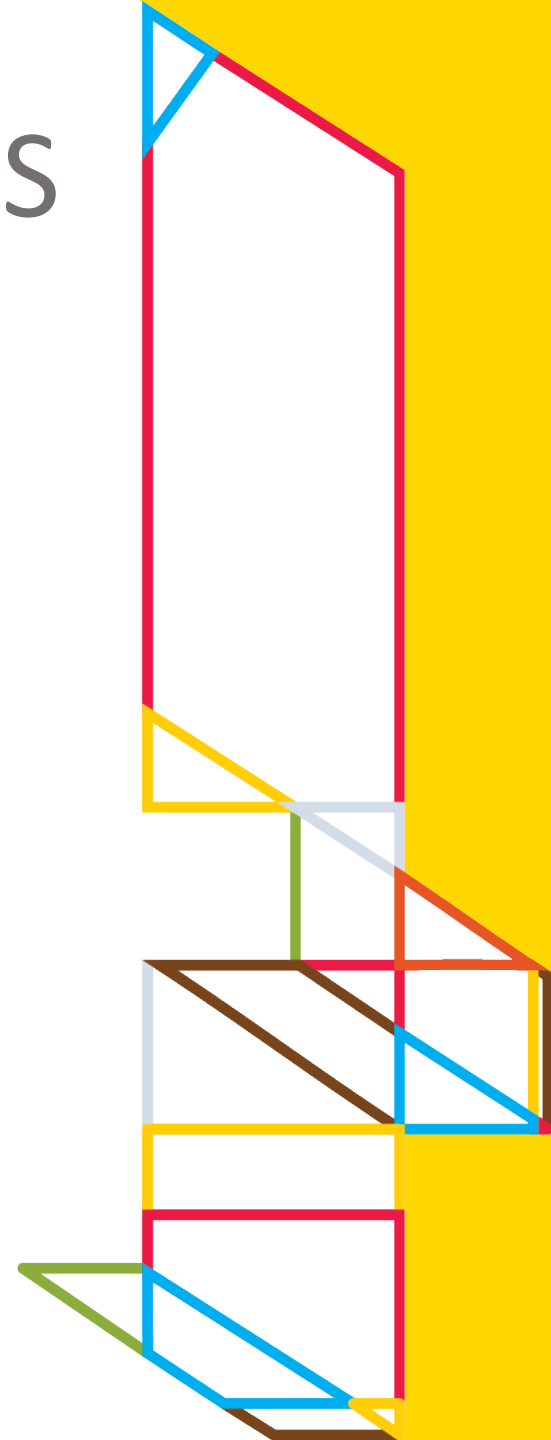
- Expands 4Culture's flagship grant program, providing operating and programmatic dollars to meet the day-to-day needs of cultural, science and technology organizations.
- Approx Total Annual Program Funding: \$36 million* (50%)
Prior funding: \$3,540,305 allocated in 2023-24.





PUBLIC SCHOOL CULTURAL ACCESS (NEW)

- Addresses gaps in K-12 cultural education. Grants will support arts, heritage, and science activities in schools.
- Approx Total Annual Program Funding: \$10.8 million* (15%)





PUBLIC FREE ACCESS (PILOT)

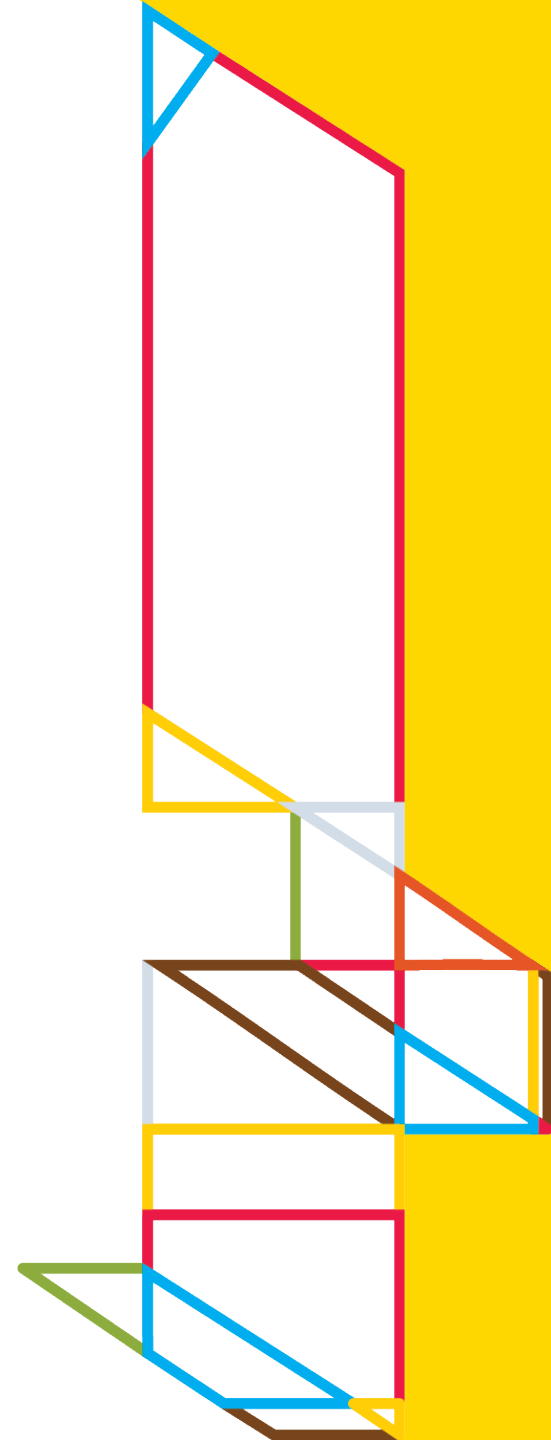
- Grants to help cover the costs organizations face to provide the public with free access to science and cultural experiences.
- Approx Total Annual Program Funding: \$10.8 million* (15%)
Prior funding: \$42,000 allocated in 2023 pilot year.





BUILDING FOR EQUITY

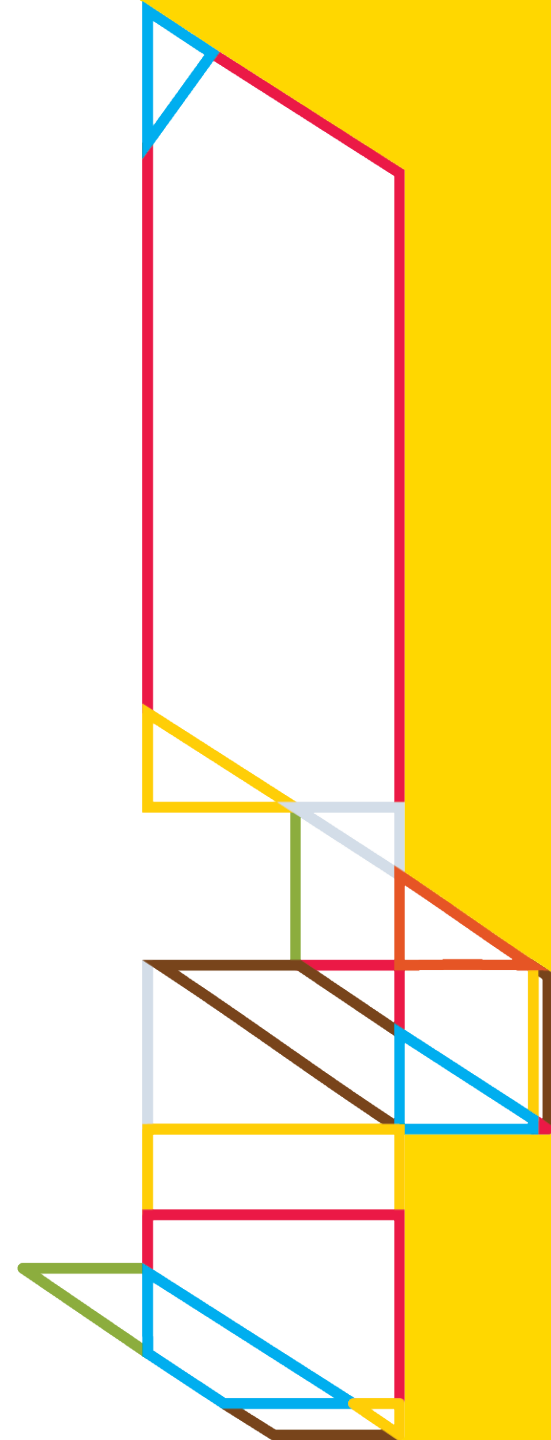
- Facilities grants to help organizations acquire, build, or renovate brick-and-mortar buildings, as well as purchase the essential equipment that makes cultural and scientific experiences possible.
- Approx Total Annual Program Funding: \$7.2 million* (10%)
Prior funding: \$1,849,155 allocated in 2023





COUNTYWIDE INITIATIVES (NEW)

- Region-wide investments that encourage collaboration, support individual cultural practitioners, limited-time events, or address unmet community needs.
- Approx Total Annual Program Funding: \$5.04 million* (7%)





LAUNCH/STARTUPS (NEW)

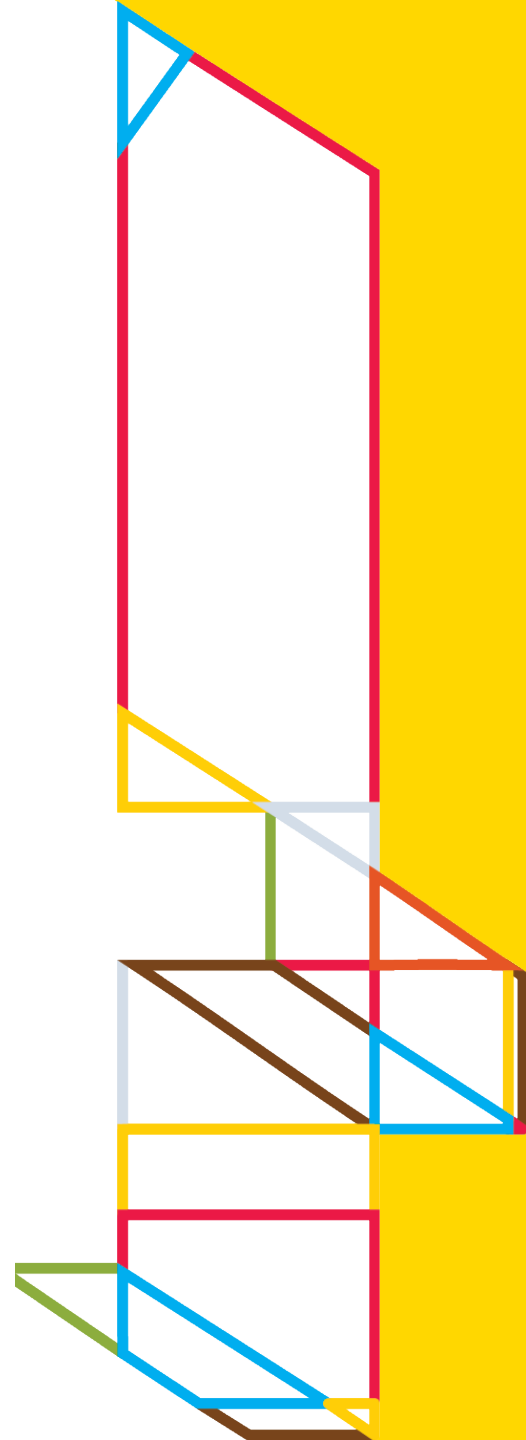
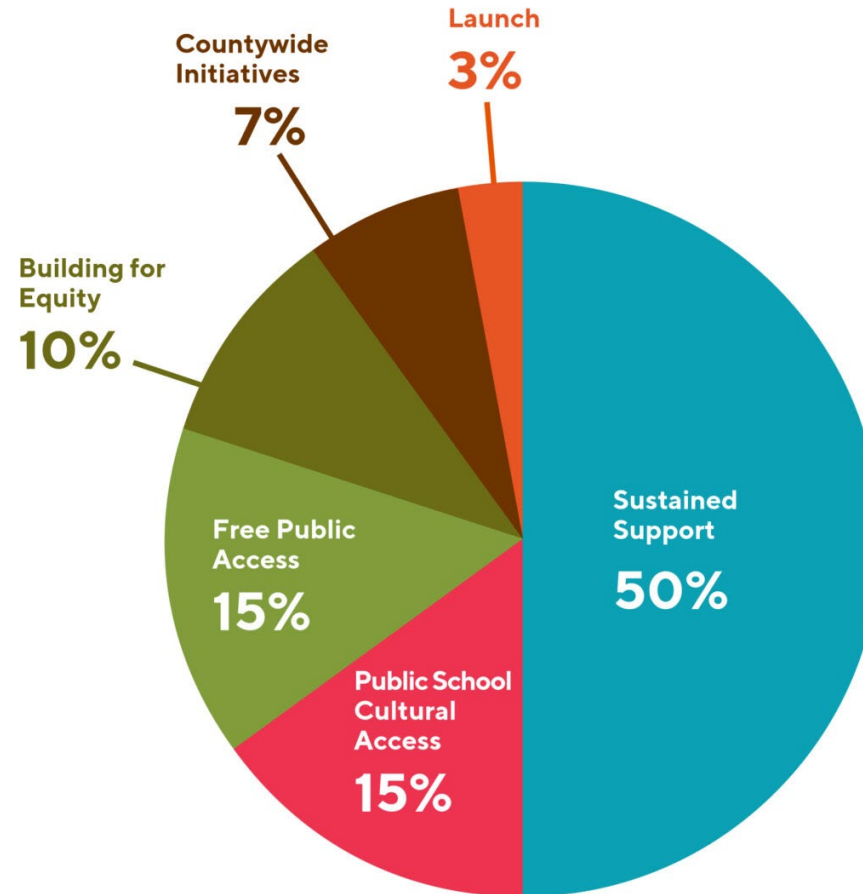
- A fund for new, emerging organizations to ensure all geographic areas of King County and all communities have access to science and culture.
- Approx Total Annual Program Funding: \$2.16 million* (3%)





DOORS OPEN PROGRAM

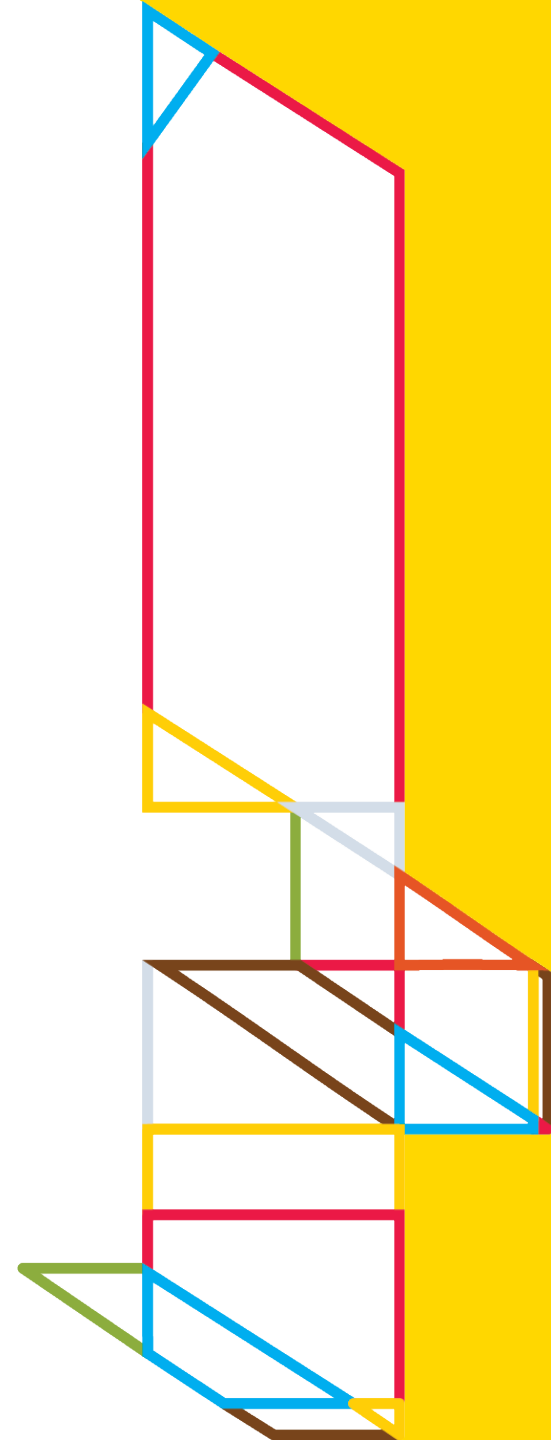
2025 AND BEYOND





2024 DOORS OPEN PROGRAMS

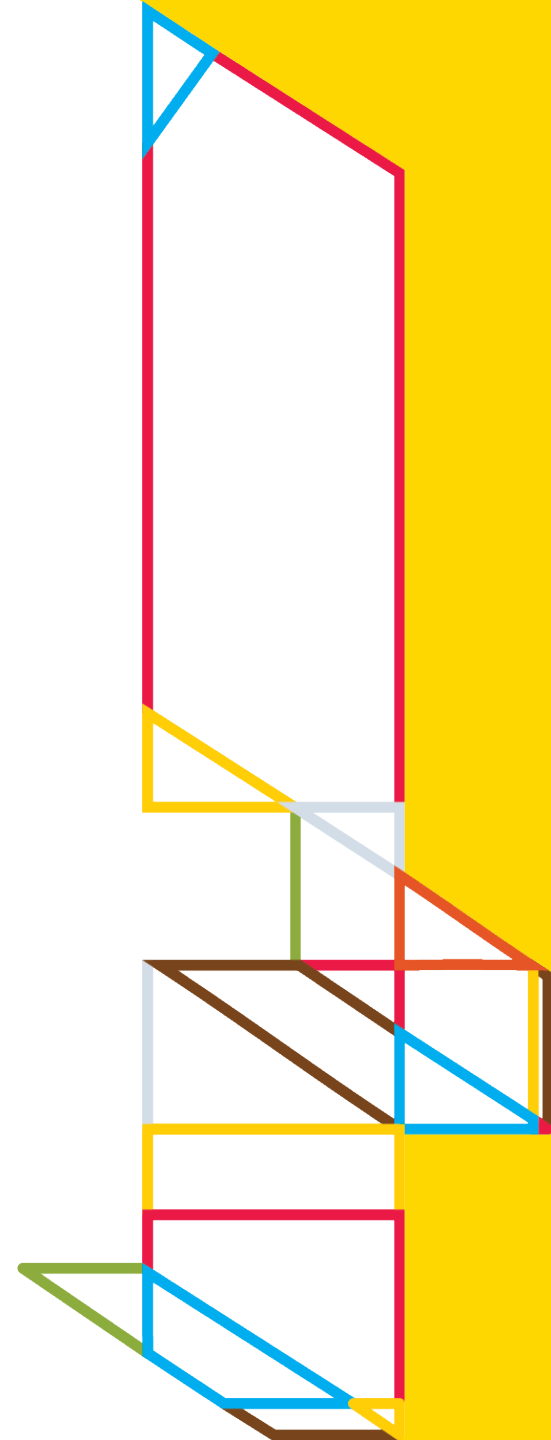
- In 2024, Doors Open revenue will fund a one-time facilities and operating grant program that will disburse approximately \$42.24 million.
- Development of these programs is underway. The guidelines and application will be available in August and applications will be due in the fall. Award notifications will go out by the end of 2024 and awardees can begin invoicing in January 2025 to receive payment.





OUTSIDE SEATTLE & COMMUNITIES OF OPPORTUNITY

- 25% of all Doors Open funding must go to eligible organizations located outside the city of Seattle.
- 105 of all Doors Open funding must go to eligible organizations serving or located within historically underinvested-in communities.





DOORS OPEN ELIGIBILITY

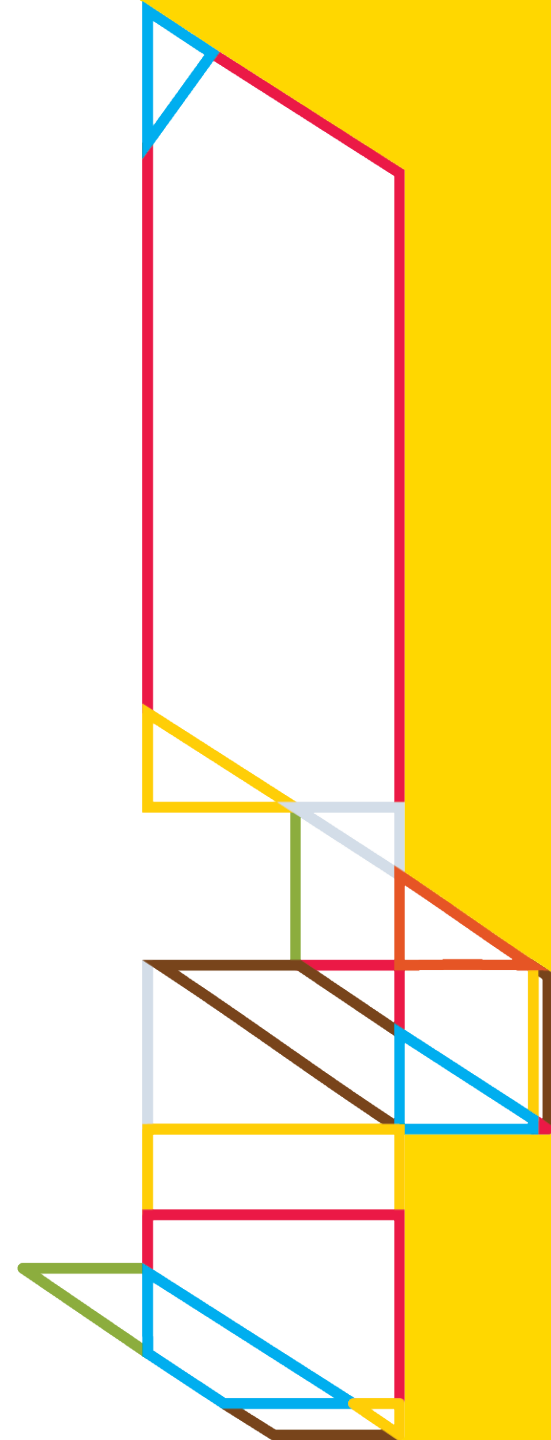
King County-based nonprofit organizations whose primary purpose is the advancement and preservation of science or technology, the visual or performing arts, including zoology, botany, anthropology, heritage, or natural history are eligible for Doors Open funding. These organizations must provide programming or experiences available to the general public. Organizations that meet this state-mandated eligibility requirement but are not designated 501(C)3 are eligible if they are fiscally sponsored by a nonprofit organization that does meet eligibility requirements.





NOT ELIGIBLE

As passed by the Washington State Legislature, Doors Open eligibility excludes individual artists, heritage professionals, and independent science and cultural workers as well as agencies of the state or any of its political subdivisions, any municipal corporation, any organization that raises money for redistribution to multiple cultural organizations, or any radio or television broadcasting network or station, cable communications system, Internet-based communications venture or service, newspaper, or magazine.





TIMELINE

Implementation Team begins Meeting (Dec '23)

Outreach for Yr1 Programs begins (Aug '24)

Doors Open Programs commence (Jan '25)

Implementation Plan due (July '24)

Yr1 awards notifications go out (Dec '24)



ORGANIZATIONAL STRUCTURE & STAFFING



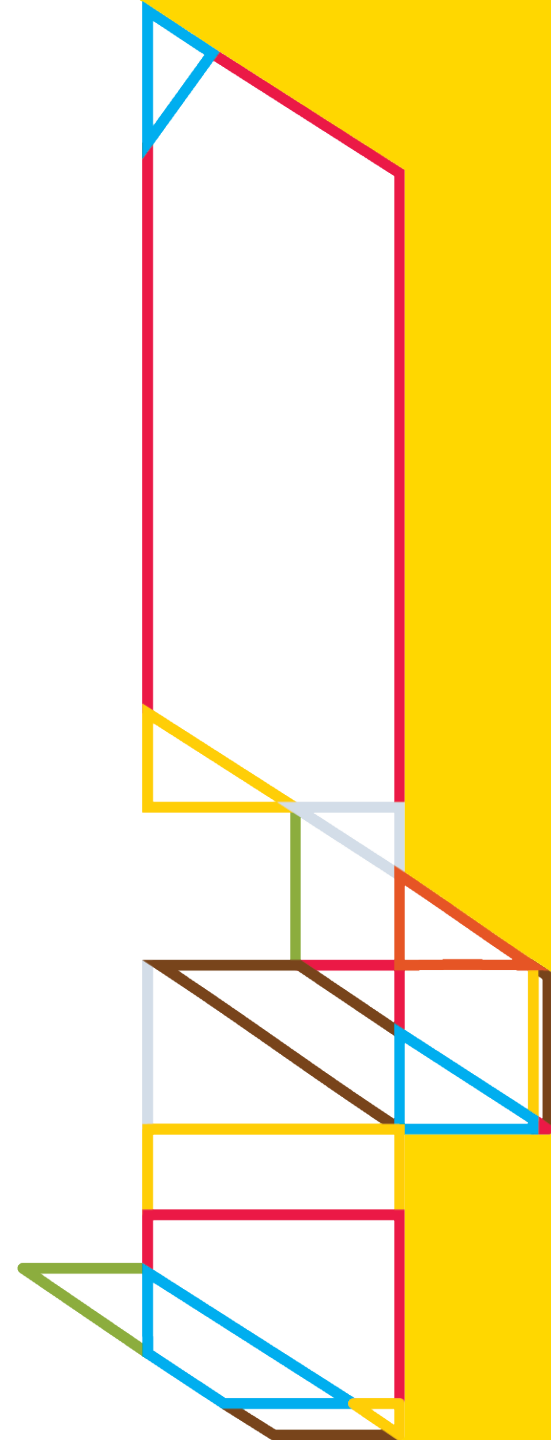
- Prioritize retention and staff wellness.
- Organizational posture of planning and development.
- Creation of a new Science Department led by Dr. Bart Cannon (w/ Advisory Committee).
- Addition of approximately 15 staff over the next three years.



FOUR KEY TAKE AWAYS

#1

There was a thoughtful, deliberate, and collaborative process that led to the creation of an equitable Doors Open program, which balances the many priorities of the cultural/science sector.



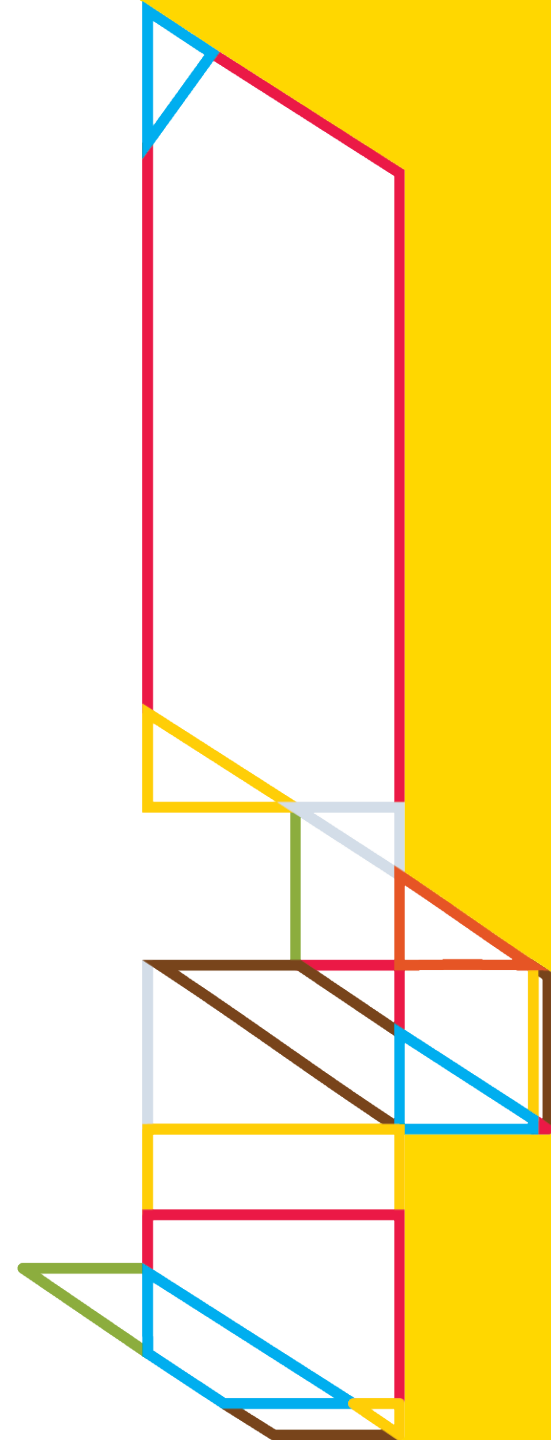


FOUR KEY TAKE AWAYS

#2

King County's arts, heritage, science and historic preservation community is staggeringly large; it includes roughly 700 organizations with combined annual operating budgets of over \$1.5 billion dollars.

Doors Open funding is a significant increase in government support, but it is only one source of funding for the cultural sector. It is crucial that family foundations, corporations, individual donors, and municipal governments maintain and increase their support to keep King County's culture and science ecosystem vibrant.



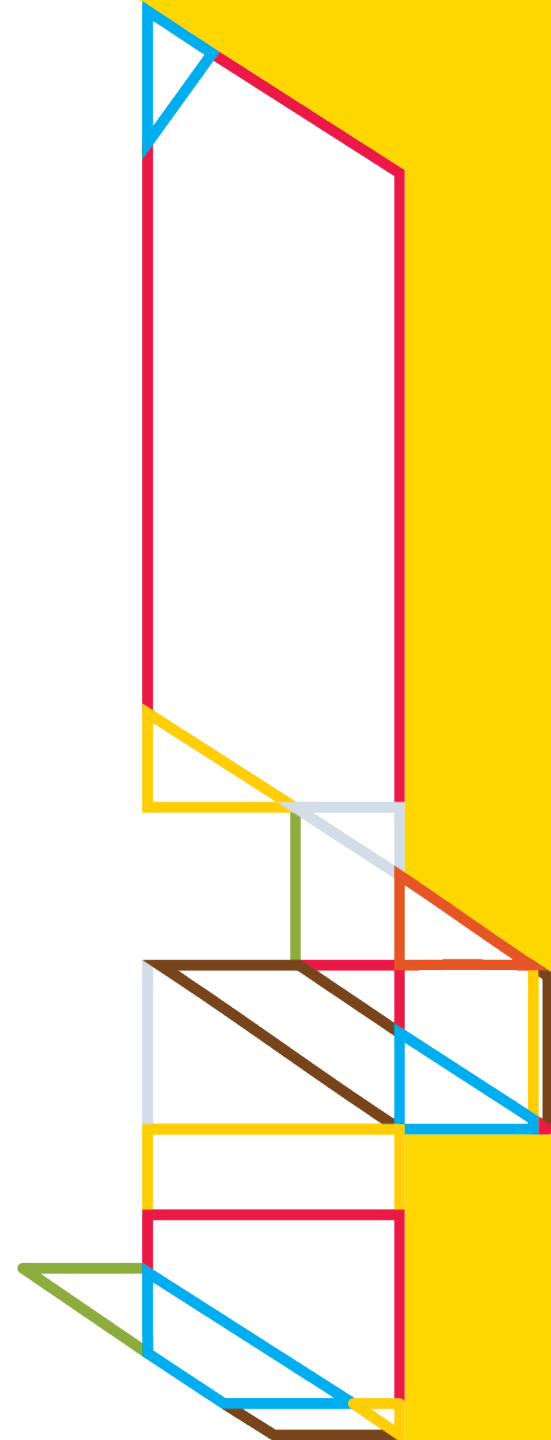


FOUR KEY TAKE AWAYS

#3

4Culture will use its established competitive grant-making processes to equitably implement Doors Open.

- Grant applications
- Community review panels
- Advisory Committee review
- 4Culture Board approval
- King County Council Oversight





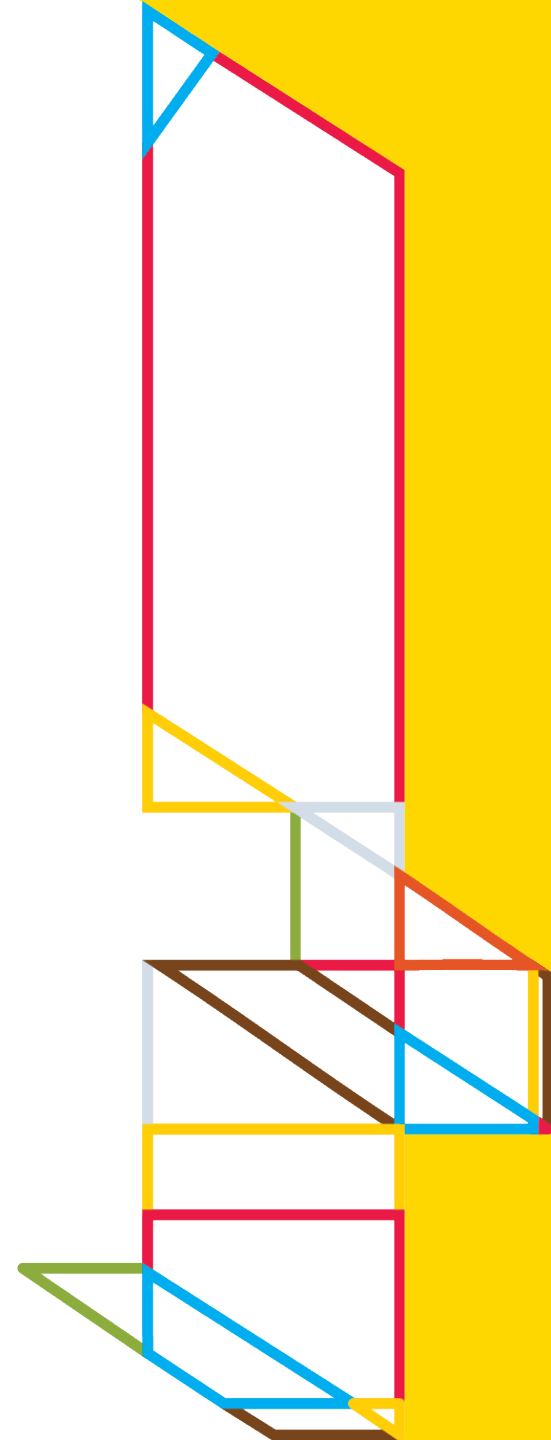
FOUR KEY TAKE AWAYS

#4

4Culture, in collaboration with its partners and stakeholders is working on the Implementation Plan and we will consistently communicate and seek input.

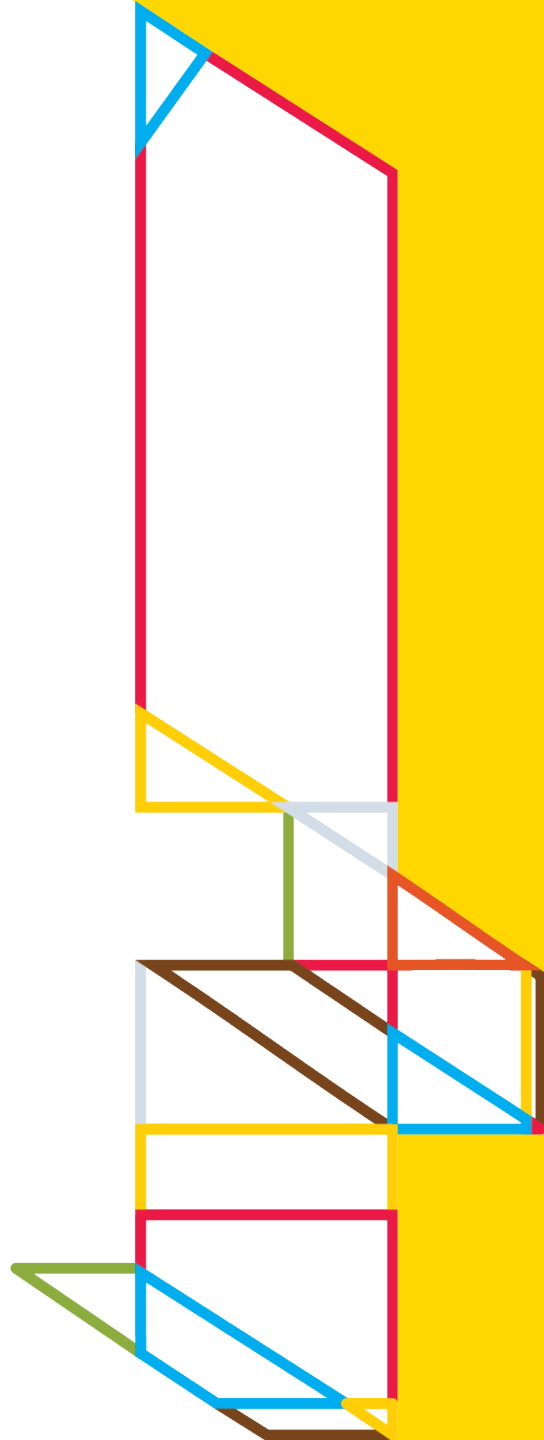
Upcoming Webinar Sessions

- Noon, April 2
- Noon, June 4
- Noon, August 6





QUESTIONS?



101 PREFONTAINE PL S, SEATTLE WA 98104
WEB 4CULTURE.ORG PH 206 296-7580