



CULTURE

A BRIGHT SPOT IN CHALLENGING TIMES

2025
ANNUAL
REPORT





INTRODUCTION



Visitors and Burke staff participate in a craft activity during Free First Thursday, 2025. Photo: Chris Snyder/Burke Museum

As we reflect on this moment, we're thrilled to share the story about the exciting work 4Culture has been doing and supporting over the past year, despite very real challenges throughout our sector. Midway through the decade, we've endured a global pandemic and its aftermath. In this period, audience levels declined and costs increased, leading cultural institutions to

make tough decisions. We've also witnessed the current administration in DC slash support and funding for many individuals and organizations in the cultural sector and wage an all-out war on diversity, equity, and inclusion efforts. Each of these truths has further limited access to arts and culture and stunted opportunities in the sector.

"We are so very grateful to 4Culture! With the opening of our new space, we have doubled our offerings because our community is VERY hungry for chances to gather and create. These funds will allow us to offer teen after school activities and kids events too. Thank you!"

NORTH BEND ART & INDUSTRY

Throughout it all, 4Culture provides support to fill gaps and strengthen growth and vitality across the sector. The reason is clear: culture is essential to thriving communities. It invites dialogue, broadens understanding, inspires imagination and curiosity, and strengthens our social bonds. In the pages ahead, you'll see that despite the challenges, there is a bright spot and reason for optimism.

For decades, 4Culture has been the funding agency in King County working to buoy the economic impact

of art and culture, and sustain a vibrant community where access to culture is open to all who live and work here. Especially in moments of uncertainty and challenge, we're here to ensure the stewardship of public art, science and technology, preservation, heritage, and arts through funding, support, and advocacy.

In the past year alone, we completed the full rollout of all Doors Open programs, King County's equitable cultural access program, which provides additional funding for cultural organizations through a 0.1 percent sales tax.

This was a big year for Doors Open. It spurred new grant programs—including Cultural Support Services Projects, Curiosity Pass: A Cultural Education Program, Launch, Network of Support—and greatly expanded Building for Equity, Public Free Access, and Sustained Support, among others. We now also have over a year's experience offering grants to Science and Technology organizations, broadening our definition of culture and providing our support to even more organizations throughout the County.



Claudine Mboligkpelani Nako and Be Russell sing "Dark Times" from the musical *Photosynthesis* during the showcase event "Photosynthesis: Seed to Stage," Langston Hughes Performing Arts Institute, 2025. Photo: David Craig

"We are all so appreciative of this funding and really looking forward to putting it to good use for enriching and connecting our community around nature. Thanks for all your work you are doing!"

VASHON NATURE CENTER

As the designated agency to distribute the Doors Open funds, 4Culture supports and advocates for culture as a means of enhancing quality of life for millions of King County residents. Doors Open created immediate relief for those affected by the challenges we face. We've published a [Summary Data Report](#) that details the funding outcomes of Doors Open by discipline, geography, and traditionally underserved communities.

Importantly, our mission will continue, as always, to focus on racial equity, and we will continue to be by your side as you navigate the current landscape. Our investments and support across the cultural landscape mean culture—in its broadest sense—remains an essential part of life in King County and accessible to all who live here.

That, right there, is reason for hope.

On the cover: Vashon Nature Center Research Assistant, Taylor Umetsu, at the annual Low Tide Celebration, Point Robinson, Vashon, 2025. Photo: Timothy Aguero Photography



GAME CHANGING MILESTONES

\$94.7
MILLION

total funding

1,086 Organizations funded

345 Individuals funded

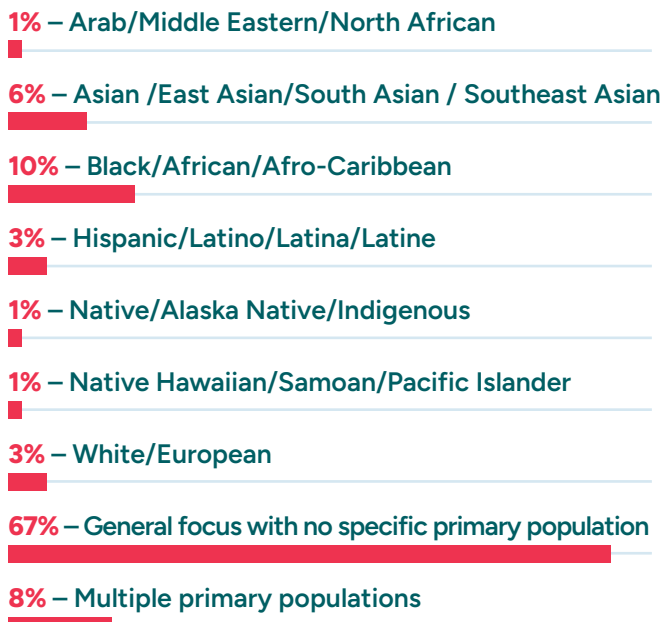
10 New Grant Programs

11,537 Jobs supported by 4Culture funding

CULTURAL SECTOR LANDSCAPE SCAN

POPULATIONS SERVED

PRIMARY COMMUNITY SERVED

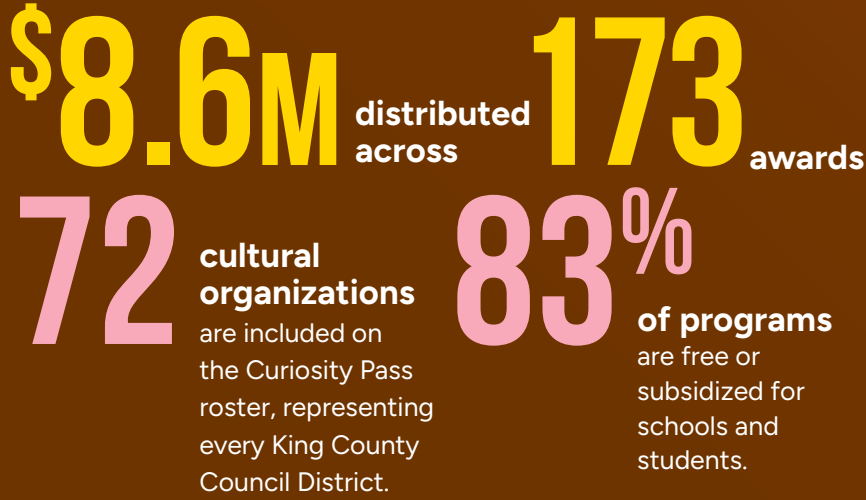


ORGANIZATIONS FUNDED

BUDGET GROUP	COUNT OF AWARDS	AVG AWARD SIZE
29% – Less than \$50,000	447	\$26,282
28% – \$50,000 – \$249,999	438	\$36,393
21% – \$250,000 – \$999,999	331	\$65,116
15% – \$1,000,000 – \$4,999,999	231	\$129,299
6% – \$5,000,000 or more	94	\$202,151
TOTAL	1541	\$60,977

CURIOSITY PASS

Launched in 2025, Curiosity Pass is 4Culture's cultural education program that ensures King County public school students get the chance to learn from and be inspired by our region's spectacular cultural organizations and educators.

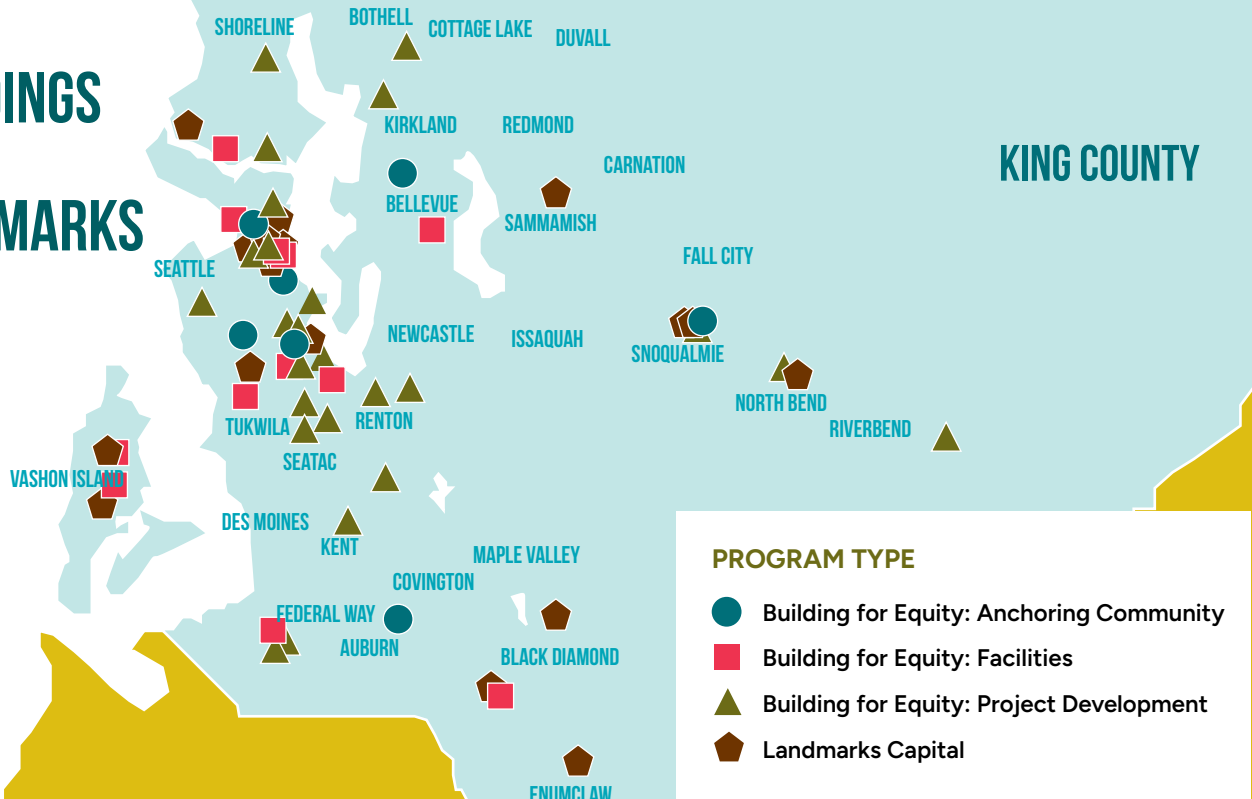


PUBLIC FREE ACCESS

In 2025, 4Culture underwrote free or reduced cost participation for



BUILDINGS AND LANDMARKS





DOORS OPEN

INVESTMENT RETURNS

In 2025, Doors Open was in full-swing. Doors Open not only helps these organizations stabilize—preserving jobs, maintaining public access to culture, and shoring up the creative sector—it also enables

them to expand their reach.

More than 700 cultural organizations throughout King County experienced meaningful growth and deepened their mission thanks to grants available through Doors

Open tax revenue. 4Culture is proud to play a pivotal role in administering Doors Open funds.

Here are a handful of the cultural organizations throughout the county that benefitted from Doors Open in 2025.

OXBOW FARM AND CONSERVATION CENTER

Science + Technology Sustained Support



Fall Farm Adventure Programming, 2025, provided by Oxbow Farm and Conservation Center

Founded with the spirit of preserving 240 acres of local land and providing public access to that land, Oxbow Farm and Conservation Center provides programs in four core areas: education, agriculture, conservation, and native plants. Recipient of a Science and Technology Sustained Support grant, Oxbow had over 9,000 attendees in 2025, many of

whom participated in education initiatives designed to provide accessible, inquiry-based learning opportunities and its agriculture programs, which explore sustainable farming practices that directly benefit the agricultural community and the broader communities who benefit from a more resilient approach to agriculture.

SEATTLE GRIOT PROJECT

Launch



Seattle Griot Project Museum Exhibit Opening Day, picturing local historians Ryan Donaldson, Stephanie Johnson-Toliver, Ray Donaldson, and family. 2025, provided by Seattle Griot Project

Seattle Griot Project (SGP) formed in 2020 to present and preserve the overlooked histories of Black communities in Washington State, and the organization became co-owners of the Washington State Black Legacy Institute (WSBLI), a cultural facility that anchors the organization's work, in

2024. Funding from the Doors Open Launch grant allows SGP to hire their first staff person and build the internal infrastructure needed for long-term sustainability. Looking ahead, SGP aims to become a statewide leader in heritage preservation, education, and community engagement.

WHITE CENTER COMMUNITY DEVELOPMENT ASSOCIATION

Building for Equity: Facilities



WCHUB Community Building, rendering by Side X Side Architects, provided by White Center Community Development Association

White Center Community Development Association (WCCDA) opened a new 25,000 square foot community-owned HUB in White Center focusing on hope, unity, and belonging. Supported by Building for Equity: Project Development and Building for Equity: Facilities grants, the HUB will feature cultural spaces, youth programs, and gathering areas, and will celebrate art, equity, and community. This project is a community-led priority shaped by years of engagement with residents, grassroots surveys, and youth feedback. Every detail of the HUB affirms the cultural pride and creativity of White Center's immigrant, refugee, and BIPOC communities.

"It is beautiful that in these uncertain times, 4Culture supports and promotes arts that are the source of the rich cultural life of the city and beyond."

IBRAHIM ARSALAN,
ART PROJECTS

WIDE WORLD FOR REFUGEE

Cultural Support Services



Refugees and Immigrants Festival, 2024, provided by Wide World for Refugee

Wide World for Refugee (WWR) was founded and is led by refugees and immigrants who have experienced displacement, cultural marginalization, and systemic inequities. Roots & Rise is a culturally responsive program designed by WWR to empower refugee and immigrant artists in King County through professional development, mentorship, and paid opportunities with access to fair compensation and heightened visibility—all so artists can sustain meaningful careers while preserving and celebrating their cultural heritage.

The aim of Roots & Rise is to create lasting public benefit, strengthen cultural equity, and amplify the voices of communities historically excluded from mainstream arts funding and infrastructure.

“All of us at the Henry Art Gallery are very grateful to 4Culture and Doors Open/Public Free Access for this very generous grant in operating support. This grant makes a huge impact in our ability to sustain free admissions to exhibitions and programs for our community. We really appreciate all the support and hard work 4Culture provides to keep arts and culture thriving in King County.”

HENRY ART GALLERY

HENRY ART GALLERY

Public Free Access



Akoiya Harris. Meet Me at The Henry Fall 2025. Photo: Jueqian Fang

Located on the University of Washington campus, the Henry Art Gallery now offers free admission to all visitors thanks to support from 4Culture and a Doors Open Public Free Access grant. This allows the Henry, a home for contemporary art and ideas, to fulfill its mission as a place to challenge norms, inspire change, and help create a more equitable world, all while amplifying a diverse array of stories and range of artistic voices.

RAINIER VALLEY HISTORICAL SOCIETY'S COLUMBIA MOTORS BUILDING

Landmarks Capital



Provided by Rainier Valley Historical Society (RVHS Accession 2005.011.0002)

Additional funding from Doors Open, including a Landmarks Capital grant, allowed Rainier Valley Historical Society (RVHS) to acquire the Columbia Motors Building in Columbia City, which will become a place for learning, community gatherings, and connection around the

rich stories and history it preserves. The acquisition will allow RVHS to create even more opportunities for access by supporting research, programming, and community engagement that help people understand their place in Rainier Valley's history.

ENVIRONMENTAL SCIENCE CENTER

Curiosity Pass: Public School Access



Salmon Heroes Field Study Program, 2023, provided by Environmental Science Center

Environmental Science Center's (ESC) three Environmental Heroes programs pair in-school lessons with outdoor field study, connecting students with their local environment to study scientific issues. Students engage with salmon streams and nearshore habitats, developing a sense of place and promoting stewardship. Together, these three programs will reach over 5,500 Highline, Renton, Auburn, Tukwila, and Kent students every year. ESC intentionally works with schools that have the highest free and reduced lunch rate in order to prioritize access for under-resourced school communities.

“Field trips are wonderful opportunities for students, but the transportation costs alone can be a huge barrier. This is why Curiosity Pass funding is so important. It significantly reduces these financial barriers and thereby literally opens doors to new and culturally rich experiences for students.”

JOHN SCHMITZ, CHIEF OF SCHOOLS, RENTON SCHOOL DISTRICT

ANNUAL FUNDING BY PROGRAM



PROJECT SUPPORT

Art Projects – Groups

Applicants: 157
Grants: 104
Total funding: \$1,134,400

Art Projects – individuals

Applicants: 309
Grants: 145
Total funding: \$1,694,989

Heritage Projects

Applicants: 110
Grants: 74
Total funding: \$964,981

Preservation Special Projects

Applicants: 16
Grants: 16
Total funding: \$212,535

Cultural Support Services Projects

Applicants: 201
Grants: 41
Total funding: \$6,055,820

Heritage Professional Development Stipend

Applicants: 33
Grants: 30
Total funding: \$50,000

Open 4Culture

Applicants: 61
Grants: 49
Total funding: \$122,500

Touring Arts Roster Presenter Incentive Program

Applicants: 18
Grants: 18
Total funding: \$30,998

OPERATING SUPPORT

Arts Sustained Support Midstream Cycle

Applicants: 70
Grants: 69
Total funding: \$1,653,626

Heritage Sustained Support Midstream Cycle

Applicants: 38
Grants: 38
Total funding: \$1,053,828

Preservation Sustained Support Midstream Cycle

Applicants: 4
Grants: 4
Total funding: \$121,800

Science + Technology Sustained Support Midstream Cycle

Applicants: 5
Grants: 5
Total funding: \$348,600

Arts Sustained Support 2025-2027

Applicants: 589
Grants: 571
Total funding: \$26,164,890

Heritage Sustained Support 2025-2027

Applicants: 87
Grants: 87
Total funding: \$6,763,7377

Preservation Sustained Support 2025-2027

Applicants: 28
Grants: 28
Total funding: \$1,629,200

Science + Technology Sustained Support 2025-2027

Applicants: 23
Grants: 22
Total funding: \$2,650,500

OPERATING SUPPORT CONT'D

Arts: Public Free Access

Applicants: 231

Grants: 231

Total funding: \$9,211,158

Preservation: Public Free Access

Applicants: 11

Grants: 11

Total funding: \$375,676

Arts: Launch

Applicants: 81

Grants awarded: 20

Total Funding: \$1,640,000

Heritage: Public Free Access

Applicants: 29

Grants: 29

Total funding: \$1,678,988

Science + Technology: Public Free Access

Applicants: 15

Grants: 15

Total funding: \$1,231,268

Heritage: Launch

Applicants: 21

Grants awarded: 6

Total Funding: \$825,000

Note:

Preservation and Science and Technology had four Launch applicants each with no awards.

BUILDING + EQUIPMENT

Building for Equity: Facilities

Applicants: 105

Grants: 21

Total funding: \$4,700,000

Arts: Emergency and Unforeseen

Applicants: 5

Grants: 4

Total funding: \$156,538

Arts: Equipment for Organizations

Applicants: 209

Grants: 101

Total funding: \$1,075,261

Science & Technology: Equipment for Organizations

Applicants: 17

Grants: 7

Total funding: \$62,635

Building for Equity: Project Development

Applicants: 62

Grants: 37

Total funding: \$1,700,000

Heritage: Emergency and Unforeseen

Applicants: 3

Grants: 3

Total funding: \$40,377

Heritage: Equipment for Organizations

Applicants: 50

Grants: 31

Total funding: \$350,151

Landmarks Capital

Applicants: 58

Grants: 26

Total funding: \$1,499,998

Building for Equity: Anchoring Community

Applicants: 10

Grants: 7

Total funding: \$3,000,000

Preservation: Emergency and Unforeseen

Applicants: 8

Grants: 8

Total funding: \$98,019

Preservation: Equipment for Organizations

Applicants: 10

Grants awarded: 4

Total funding: \$29,459

Landmark Nomination Support

Applicants: 2

Grants: 2

Total funding: \$13,160

CULTURAL EDUCATION

Curiosity Pass – Cultural Education Projects

Applicants: 184

Grants: 173

Total funding: \$8,577,140

Public Art Programs and Projects with Artists Selected in 2025

Gallery 4Culture

Storefront Media Gallery: Artist Carousel

Alki Wet Weather Treatment Station: Standby Generator Project, King County Wastewater Treatment Division

PUBLIC ART

KING COUNTY PORTABLE WORKS COLLECTION

Photographs, paintings, small sculptures—these are some examples of the 2,000-plus pieces in King County’s Portable Works Collection, which is administered by 4Culture. Each of the artworks in this vast collection enrich publicly accessible county spaces—some move from one location to another over time, while others belong to site-specific collections and move exclusively within those facilities. The collection features works by emerging and established artists working in a broad range of media.

The Portable Works Collection celebrates the diverse communities and perspectives within King County. Acquisitions are made via open calls and invitations when needs arise and funds are available. In 2025, the 4Culture Public Art team installed over 170 artworks in locations as varied as offices, Harborview hospital, County courthouses, health centers, Metro transit facilities, and other public gathering spaces.



Sara Mast. *Scorpion's Heart*, 2008.
Encaustic and natural pigment on paper.
Harborview Medical Center, Seattle, WA.
King County Public Art Collection. Photo: joefreemanjunior.com



Installation view of various works by Stefanie Ashby-DiRicco, David Winston, Thomas Stream (Aleut/ Sun'aq), Kevin Goodrich, and Cecilia Bomberg. Harborview Medical Center, Seattle, WA. King County Public Art Collection. Photo: joefreemanjunior.com

PUBLIC ART

WATER LOG | AREA C PROJECTS

The fence of King County Wastewater's Rainer Valley Wet Weather Storage Facility in Columbia City is encircled with cut-aluminum phrases that, together, tell a story about our relationship with and to water. Conceived and built by AREA C Projects, *Water Log* exhibits phrases in multiple languages—English, Spanish, Somali, Tagalog, Vietnamese, Amharic, Lushootseed, Russian, and Chinese—to weave a narrative about how water moves through the collective life of a city.

The artwork's title—*Water Log*—works in two ways. In the maritime trade, a log is a book in which important data is recorded, and this piece is itself about the vital role water plays in our community. The other idea conveyed in the work is the experience of saturation—that is, what it means to be full of water, or thoroughly soaked or submerged in it—with the goal of reminding people that water is all around us and is essential to who we are.



AREA C Projects. *Water Log* (detail), 2025. Aluminum. King County Public Art Collection. Rainer Valley Wet Weather Storage, Seattle, WA. Photo: joefreemanjunior.com

A CONVERSATION WITH KING COUNTY EXECUTIVE ZAHILAY



King County Executive Girmay Zahilay



4Culture Executive Director Brian J. Carter

King County is a leader in providing public funding to ensure the cultural sector is a vibrant part of the community. Recently, **4Culture Executive Director Brian J. Carter** and the new **King County Executive Girmay Zahilay** had a chance to talk about how arts and culture contribute to strong and thriving communities—how they bring people together, activate our

public spaces, and preserve history and identities. They also discussed how cultural activities are a powerful means to amplify the voices of historically marginalized communities and give them agency to tell their own stories. In short, the cultural sector is a core part of any effort to build a more inclusive, thriving King County.

Here are highlights from that conversation:

Brian J. Carter (BJC):
Let's talk about the collaborative relationship between King County and 4Culture: what has that collaboration been like for you, and why is it so important?

Girmay Zahilay (GZ):
Institutions like 4Culture play a vital role in ensuring that arts and culture are integrated across policy, planning, and community development. King County's relationship with 4Culture has been extremely

collaborative, especially with the transformative Doors Open legislation. I look forward to continuing to grow that relationship and elevate the role of our arts and culture agencies in decision-making processes.

BJC: You were a co-sponsor of the Doors Open legislation which passed unanimously.

Can you talk about what led you to sponsor the legislation and what you're most excited about?

GZ: Doors Open is historic legislation that stabilizes and grows the county's cultural sector after the COVID-19 pandemic. With feedback from 4Culture, I was proud to champion amendments that advance economic revitalization strategies in our commercial centers and that direct a minimum of 10% of funds to Communities of Opportunity in King County.

I am really excited to see how those communities, especially those in unincorporated areas and South King County, tell their stories through their cultural activities.

BJC: Is there anything you would like to say to readers of our annual report specifically about arts and culture?

“From the need for more affordable housing to reducing gun violence, the arts are deeply intertwined with our region’s most pressing issues. Our region’s cultural activities strengthen social bonds and help communities solve problems.”

KING COUNTY EXECUTIVE GIRMAY ZAHILAY

GZ: My office is committed to uplifting our region's cultural organizations, recognizing that many are still recovering from the economic impacts of the pandemic. We are supporting arts, culture, heritage, and science and technology initiatives countywide, and helping grow our local creative economy that includes our evolving film and music industry. We are also taking inventory of all county-owned land and properties to maximize opportunities for space activation in partnership with our creative community.

BJC: Is there anything you'd like them to know about what you're working on for King County?

GZ: As Executive, I'm dedicated to building a region that allows everyone to thrive, and I see the arts as a critical component to my priorities. One of the main challenges our region faces is

affordability. Rising costs are pushing too many neighbors and small businesses out, and this is especially critical for our creative workforce and arts and cultural organizations.

A core policy priority for me is to build for affordability – building more workforce housing, childcare, and infrastructure to support our growing region and lower costs. I am also interested in updating zoning to prioritize cultural spaces in high-displacement areas. These organizations are cultural anchors in our communities, and we need to be doing more to keep them rooted in place.

BJC: What King County cultural organization is near and dear to your heart and why?

GZ: There are too many to count! I will emphasize that pound for pound we live in the greatest region in the world in terms of amazing arts and culture assets.

BOARD & STAFF

BOARD

Staci Adman
Bethany Fackrell
Leanne Guier
Afua Kouyaté
Seth Margolis
Catherine Nueva España
Bryan Ohno
AC Petersen
Jake Prendez
Latha Sambamurti
Steven Schindler
Neil Strege
Asia Tail
Eugenia Woo

Ex Officio Board Members 2025

Claudia Balducci
De'Sean Quinn
Sarah Steen

STAFF

Riza Almanza
Maisha Barnett
Elyn Blandon
Anna Callahan
Bart J. Cannon, Ph.D.
Brian J. Carter
Calandra Childers
Cassie Chinn
Chelsea Clifton
Jonathan Cunningham
Fiona Dang
Christina DePaolo
Sol Dressa
Elly Fetter
Bret Fetzer
Pete Fleming
Jordan Freeman
Jon Graef
Andres Guerrero-Guzman
Melissa Huggins
Selina Hunstiger
Korra Kairos
Phung Lam
Emily P. Lawsin
Andy Le
Evan Linett
Erica Maniez
Shaun Mejia
Guy Merrill
Claire Miccio
Lauren Miles
Jackie Mixon
Jordan West Monez
Bella Monju
Casey Moser
Megumi Nagata
Melissa Newbill
Scott Oshima



Kelly Pajek
Dana Phelan
Chieko Phillips
Jennifer Pritchard
Liz Reyes
Jayden Robles
Dalayna Sampton
Maya Santos
Lauren Semet
Ana Sneed
Fundisha Tibebe
Anadelia Torres
Amber Trillo
Natasha Varner, Ph.D.
Bryan Wilson
Nina Yarbrough

ADVISORY COMMITTEES

ARTS ADVISORY COMMITTEE

Jessica Borusky
Amy Dukes
Bryan Ohno (Board Representative)
Jessica Ramirez
Sudeshna Sen
Lauren Superville

HERITAGE ADVISORY COMMITTEE

Suzanne Greathouse
Seth Margolis (Board Representative)
Rachel McAlister
Temi Odumosu
Reese Tanimura
Teofila (Teya) F. Cruz-Uribe

HISTORIC PRESERVATION ADVISORY COMMITTEE

Stefanie Barrera
Robyn Mah
Dawn Moser
Maira Nadal
Huy Pham
Asia Tail (Board Representative)

BUILDING FOR EQUITY ADVISORY COMMITTEE

Rachael Kitagawa
Katie Oman
Taelore Rhoden
Sarah Steen
Stephen Yamada-Heidner

ADVISORY COMMITTEES, CONT'D

NATIVE ADVISORY COUNCIL MEMBERS IN 2025

Francesca Murnan
(Shawnee/Cherokee)

Dakota Murray (Bad River
Ojibwe/Rosebud Sioux)

Temryss Lane (Lummi)

Tim Lehman (Northern
Arapaho)

James Lovell (Turtle
Mountain Ojibwe)

Polly Olsen (Yakama)

PUBLIC ART ADVISORY COMMITTEE

Sonia-Lynn Abenojar

Leo Berk

Elizabeth Conner

Kate Fernandez

Tommy Gregory

Matt Gurrad

Philippe Hyojung Kim

Keith McPeters

Catherine Nueva España
(Board Representative)

Elisheba Wokoma

SCIENCE AND TECHNOLOGY ADVISORY COMMITTEE

Arthur Bednar

Stephanie Bohr

Kent Chapple

Kyle Johnson

Zeta Strickland

Felipe Vera

Rosie Wilson-Briggs

PANELISTS

Adrian Alarilla, Ph.D.

Gabriel de los Angeles

Judy Avitia-Gonzalez

Michelle Bacca

Austin Bell

Melany Bell

Eleanor Boba

Jessica Boruski

Erin Elyse Burns

Megan Castillo

Em Chan

Julie Chang Schulman

Gina Coffman

Amy Dukes

Taha Ebrahimi

Malcolm Fox

Jaebadiah Gardner

Shruti Ghatak

Robert Gilliam

Njuguna Gishuru

Courtney Good

Suzanne Greathouse

Monette Hearn

Angie Hinojos

Amy Hirotaka

Donna Hogerhuis

Darelle Holden

Michael Hong

Lydia Huang

Aiyana Jakowski

Saya Jenks

Emily Jerger

Khazm Kogita

Rachael Kitagawa

Kim Kotovic

Eileen Yamada Lamphere

Debra Landers

Lizzy Lane

Leilani Lewis

Ell Lin

Timothy Lowry

Jasmine Mahmoud

Beatris A. Mendez
Gandica

Micah Merryman

Yegizaw Michael

Noelani Montas

Dakota Murray

Erin O'Brien

Katie Oman

Patrick Oye

Malia Peoples

Yvette Perrantes

Rachel Perry

Warren Pope

Mx. Pucks A'Plenty

Jessica Ramirez

Shenise Ramirez

Taelore Rhoden

Natasha Rivers

Misha Rodarte

John Rodezno

Lidia Sanchez

Sili Savusa

Meena Selvakumar

Krystal Smith

JessXSnow

Liisa Spink

Tyler Sprague

Jennifer Strongin

Asia Tail

Vivian Tam

Roger Tang

Toyia Taylor

Yordanos Teferi

Patrice Thomas

Karen Toering

Debra Twersky

Dan Ullam

Lex Vaughn

Gerie Ventura

Isadore White

Cameron Wong

Kathleen Wong

Simona Zappa

“We’re so deeply grateful, as is the community of artists who benefit from their time spent at our events. Your support helps those events stay free, compensates the artists we work with, and gives us hope for a long future of making Seattle glow a little brighter.”

SEATTLE FLOW ARTS
COLLECTIVE

4CULTURE 2025 FINANCIALS

Revenues and Other Sources	2025	2024	2023
Doors Open Sales Tax Revenue	\$95,792,690	\$70,830,401	\$ -
Lodging Tax Revenue	14,471,367	14,787,239	14,361,606
King County Public Art Revenue	6,203,405	1,681,105	4,874,364
King County Appropriations	-	2,869,317	-
Investment Earnings	4,614,166	2,403,252	1,917,741
Advances from King County	3,615,310	-	-
Miscellaneous Other	144,780	32,126	26,770
Total Revenues*	\$124,841,718	\$92,603,440	\$21,180,481

Expenditures and Other Uses	2025	2024	2023
Doors Open Programs	\$63,664,204	\$1,543,699	\$-
Other Arts, Heritage, and Preservation Grant Programs	11,840,936	11,198,047	10,535,796
Public Art Projects	2,376,448	2,536,439	2,367,177
COVID Relief Pass-Through	-	2,726,290	-
Repayment of Advances from King County	2,000,000	2,000,000	2,000,000
Management and General Supporting Activities	1,264,357	1,056,906	921,796
Debt Service	300,000	300,000	300,000
Leasehold Improvements	64,742	267,589	-
Total Expenditures and Other Uses*	\$81,510,687	\$21,628,970	\$16,124,769

Fund Balances	Dec. 31, 2025	Dec. 31, 2024	Dec. 31, 2023
General Fund	\$8,587,263	\$6,517,232	\$4,269,792
Lodging Tax Special Revenue Fund	8,227,637	3,428,880	4,922,679
1% for Art Special Revenue Fund	25,310,866	20,656,446	20,431,487
Cultural Special Account Fund	11,551,649	13,555,141	12,153,012
Doors Open Special Revenue Fund	102,405,056	68,593,741	-
Total Fund Balances	\$156,082,471	\$112,751,440	\$41,776,970

*Total revenues and expenditures differ on an annual basis due to timing factors in the inflows and outflows of the various programs' financial resources.

NOTE: 2025 financial information is based on unaudited fund financial statements. Requests for the most recent complete audited financial report should be addressed to 4Culture's finance department at 4Culture, 101 Prefontaine Place S, Seattle, WA 98104.

A LOOK AHEAD



Japan Fair,
Meydenbauer
Center,
Bellevue,
2025. Photo:
Timothy Aguero
Photography

As we look towards the year ahead, there's so much to be excited about. With the full rollout of **Doors Open** under our belt, we'll take a close look at what we've learned in this inaugural year and consider all we've heard from the community. Going forward, we'll continue to refine 4Culture to make it even stronger and more successful in the years to come.

We've also begun an expanded **practice of evaluation** to better understand the impact of public funds invested in cultural programs and more clearly assess the sector's needs and opportunities. These new methodologies will position 4Culture for an even greater and far-reaching impact, as we remain laser-focused on making culture accessible to all who live and work here.

Our team enjoys visiting with organizations and individual artists and practitioners – meeting you where you are. As 4Culture has grown, we've increased our site visits to recipients, a practice that's very important to help our new **Science and Technology team** build relationships and continue developing this new program area.

In 2025, we opened the Native Cultural Facilities grant and look forward to reporting more about it next year. The year ahead is also the year **Curiosity Pass** recipients will launch their programs in and out of schools, as we will continue to roll out this cultural education program that creates and sustains engaging arts, cultural, and science-based experiences for students across King County. This grant will fund

partners with youth-focused programs meant to expand learning opportunities in K-12 public schools.

In addition, **several new public art projects** will be installed and unveiled in King County public spaces throughout 2026, including commissioned works with King County Solid Waste Division at the South County Transfer & Recycling Center, King County Parks at Eastrail in Woodinville and with other county partners on bridges, buildings and more. We'll also continue to add to the King County Public Art Collection with artwork selected through an open call for two-dimensional and low-relief artworks by King County-based artists.

There's much more to come. Thank you for your continued partnership and support.



James Hartunian. *TIMBER!*, 2025. Gallery 4Culture, Seattle, WA. Photo: joefreemanjunior.com

VISIT US

101 Prefontaine Pl S, Seattle WA 98104
hello@4culture.org | (206) 296-7580

Open Monday-Friday, 9AM-5PM

4culture.org



CULTURE